

# NEW HAMPSHIRE PYRAMID MODEL REPORT

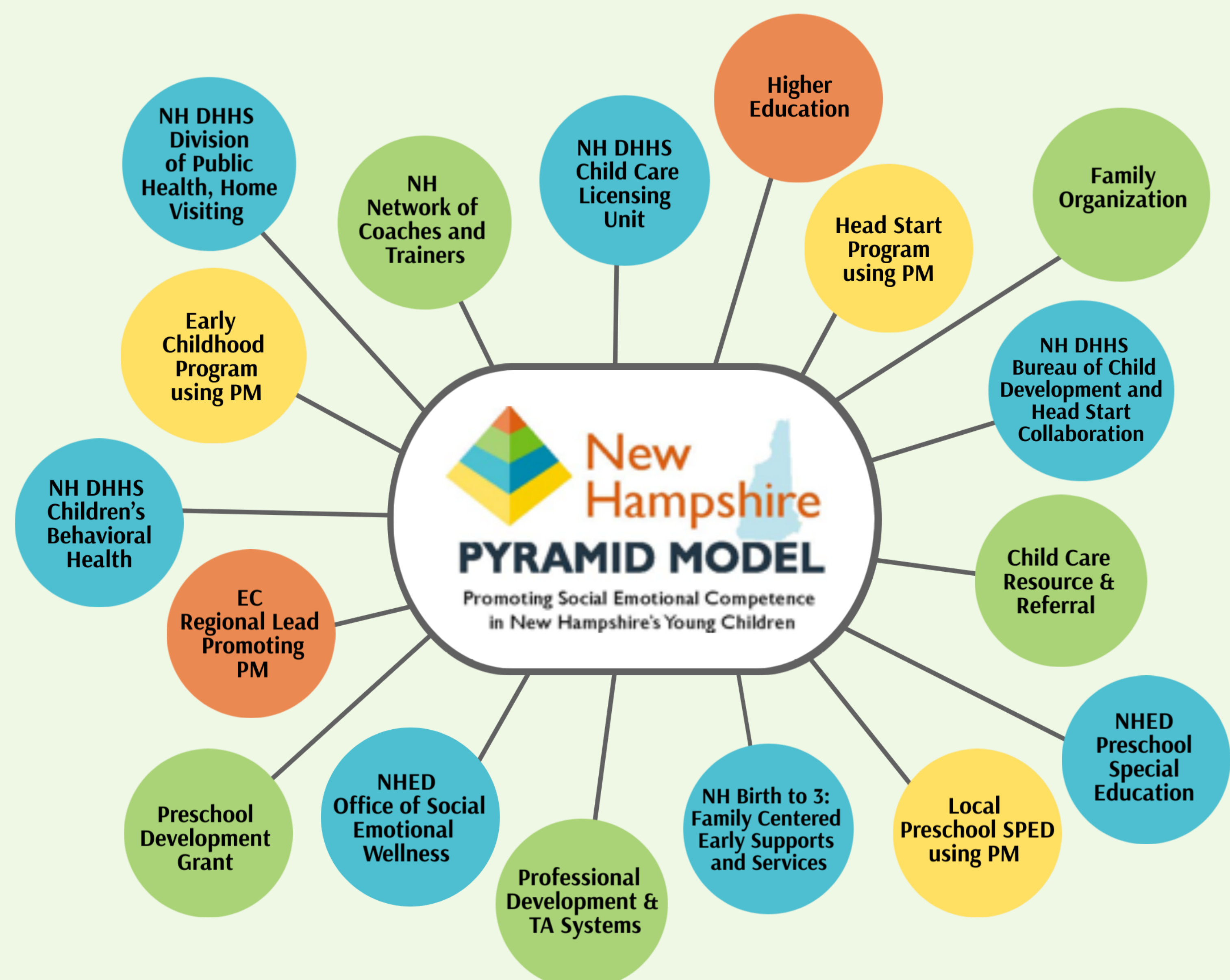
## January 2022 - June 2023

The Pyramid Model (PM) is a framework for implementing a culturally responsive and equitable multi-levelled system of supports designed to enhance social and emotional competence of young children, promote the development of supportive program policies and practices, as well as providing early care and education providers with practice based coaching to ensure that evidence based practices are integrated and used with fidelity.

There are 4 essential elements to being a Pyramid Model state that include:

- Cross-sector State Leadership Team
- Implementation Sites
- Network of Program Coaches and Trainer
- Data/Evaluation

### Graphic Key



These areas of representation make up the cross-sector State Leadership Team (SLT) that meets monthly to implement PM statewide.

## Vision & Mission

The Pyramid Model SLT updated its vision and mission statements to guide its work. The revised statements are:

### Vision Statement:

New Hampshire families, early childhood programs and communities provide environments that nurture, promote and facilitate the social emotional development and learning of all young children, birth through six years.

### Mission Statement:

The NH Pyramid Model SLT establishes and maintains a sustainable state infrastructure that supports high fidelity implementation of the Pyramid Model in early childhood care and education settings statewide.

## Merging of iSocial and PM State Leadership Team

During the third and fourth quarters of 2022, *iSocial* began to wind down its 5th and final year of funding with an intentional effort to merge its Leadership Team with the PM State Leadership Team (SLT). This effort resulted in an intensive review of the SLT's composition to ensure membership is inclusive of all important perspectives. The graphic above reflects the successful merging of the two Leadership Teams.

*\*iSocial was a 5-year NHED initiative (2017-2022) that focused on improving social emotional outcomes of infants, toddlers, and young children with disabilities (birth to age 5) through the implementation of the evidence-based Pyramid Model Framework.*

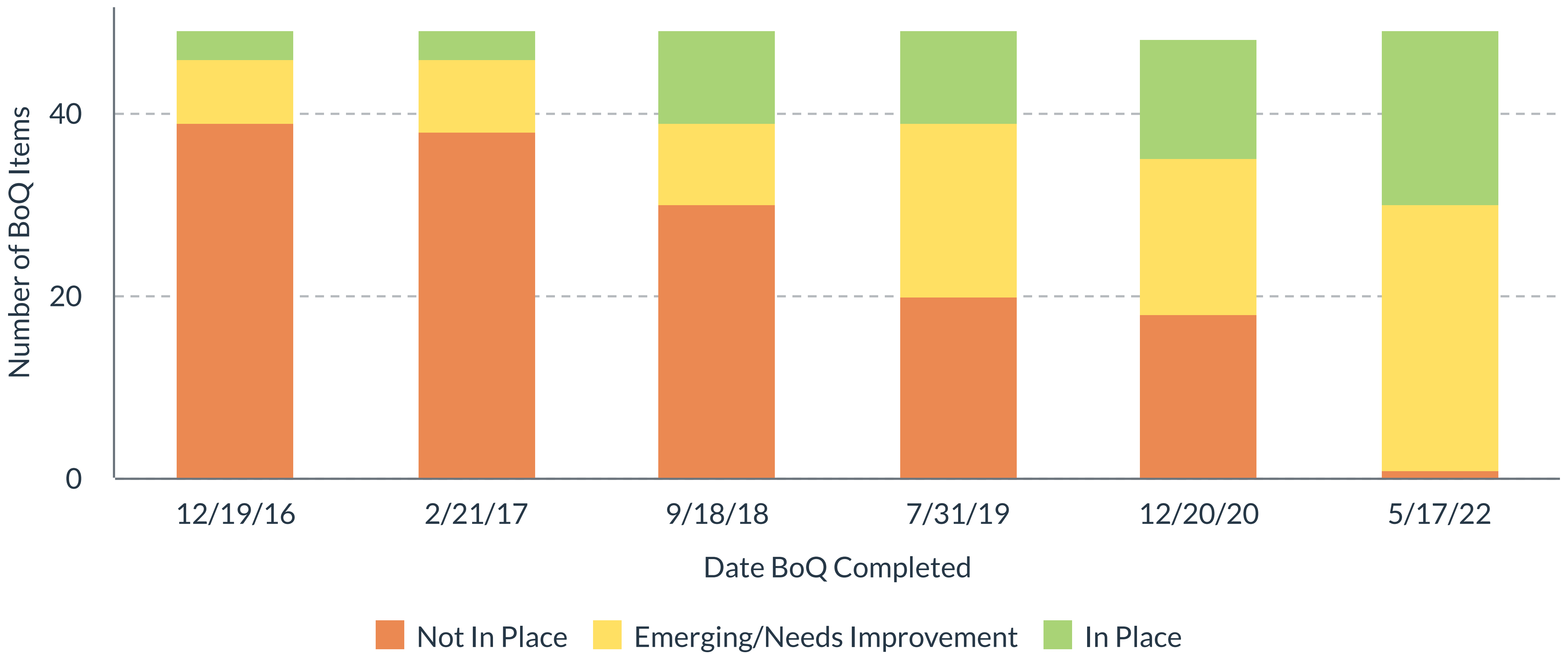


## Helpful Abbreviations and Acronyms



- NH DHHS - New Hampshire Department of Health and Human Services
- NHED - New Hampshire Department of Education
- PTAN - Preschool Technical Assistance Network (affiliate of Pyramid Model Consortium)

## State Leadership Team Benchmarks of Quality (BoQ)



This graphic illustrates the impact of the SLT's efforts over the past 6 years to establish the infrastructure required for statewide Pyramid Model implementation.

## PROFESSIONAL NETWORK OF COACHES AND TRAINERS

From 1/22-6/22 NHED, Bureau of Special Education Supports funded the work of Process Coaches, Practice Based Coaches and Trainers working with iSocial implementation sites that included school districts, childcare programs, Head Start And Early Head Start. From 7/22-6/23 NH DHHS, Bureau of Child Development and Head Start Collaboration funded PTAN Program Coaches to support child care programs awarded a step on the Granite Steps for Quality, Pyramid Model pathway. Program Coaches have the unique skill set to support sites with process and practice-based coaching as well content delivery as needed.

# of PM Trainings offered statewide

34

845

Total # of participants in PM training

3.8

out of 4

Participants' overall rating on training evaluations

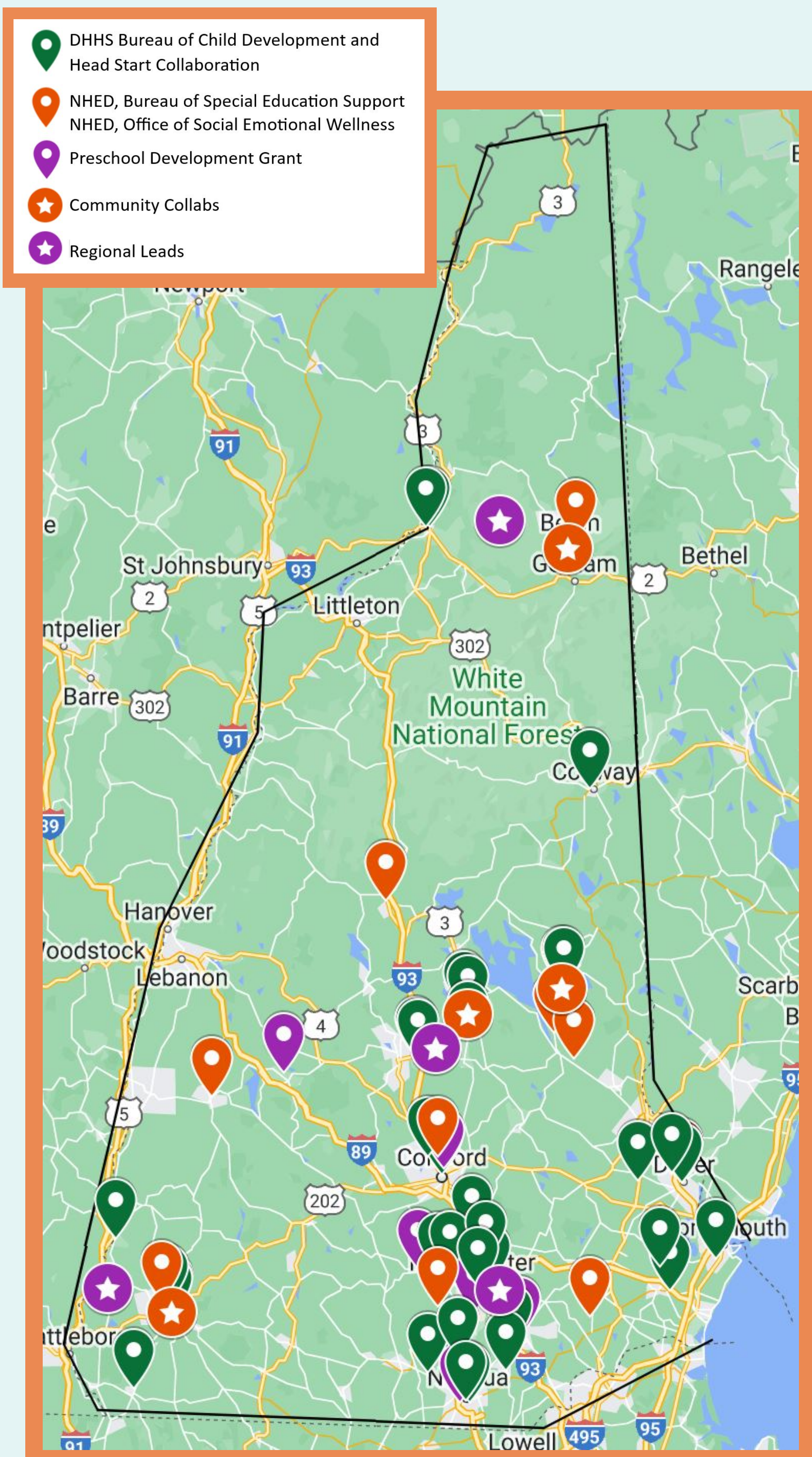
Through a collaborative funding agreement between NHED and NH DHHS, NH residents have free access to 10 Pyramid Model e-Modules, on the ProSolutions training site.

- Building Positive Social Emotional Skills for All Children: Introducing the Pyramid Model Framework (1 hr)
- Getting Ready for Program-Wide Pyramid Model Implementation (3 hrs)
- Prevent-Teach-Reinforce for Young Children (8 hrs)
- Pyramid - Reducing Implicit Bias (2 hrs)
- Pyramid - Wellness: Taking Care of Yourself (2 hrs)
- Pyramid Birth-Five (18 hrs)
- Pyramid Infant Toddler (18 hrs)
- Pyramid Practice-Based Coaching (8 hrs)
- Pyramid Preschool (18 hrs)
- Trauma-Informed Care & The Pyramid Model (5 hrs)

**83 hours**  
of **FREE**  
course content

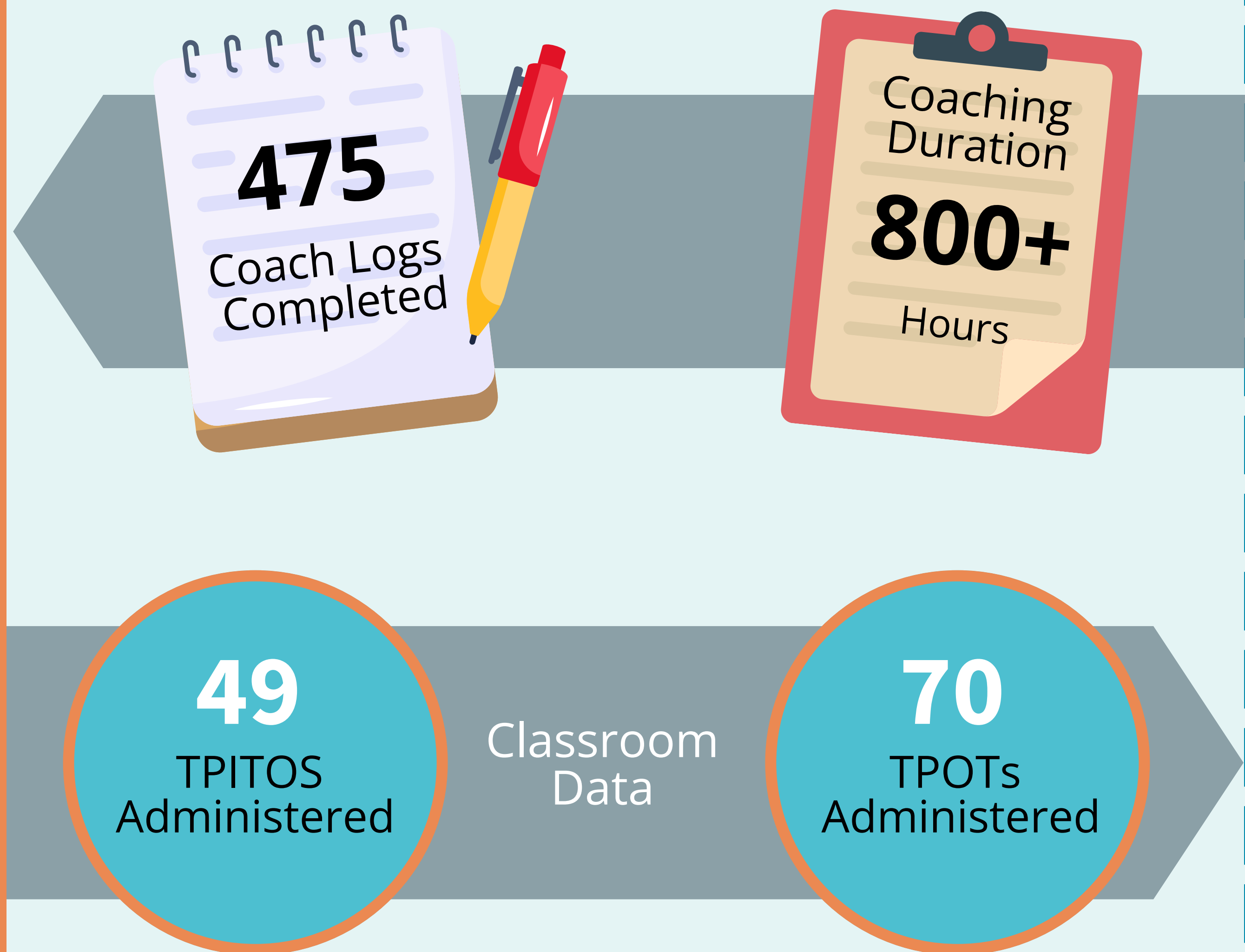
**7,639**  
Total Users

## IMPLEMENTATION SITES



Through diverse funding from the NHED, NHDHHS, and Preschool Development Grant-Birth-5, **47** implementation sites were established.

In 2022, NH started utilizing the Pyramid Model Implementation Data System (PIDS). Below represents data collected from implementation sites.



The SLT is coordinating efforts across various early childhood sectors throughout the state.

This infographic highlights possible on-ramps to connect to Pyramid Model supports.

A major focus and area of growth starting in 2022 was around the Child Care Pathway.

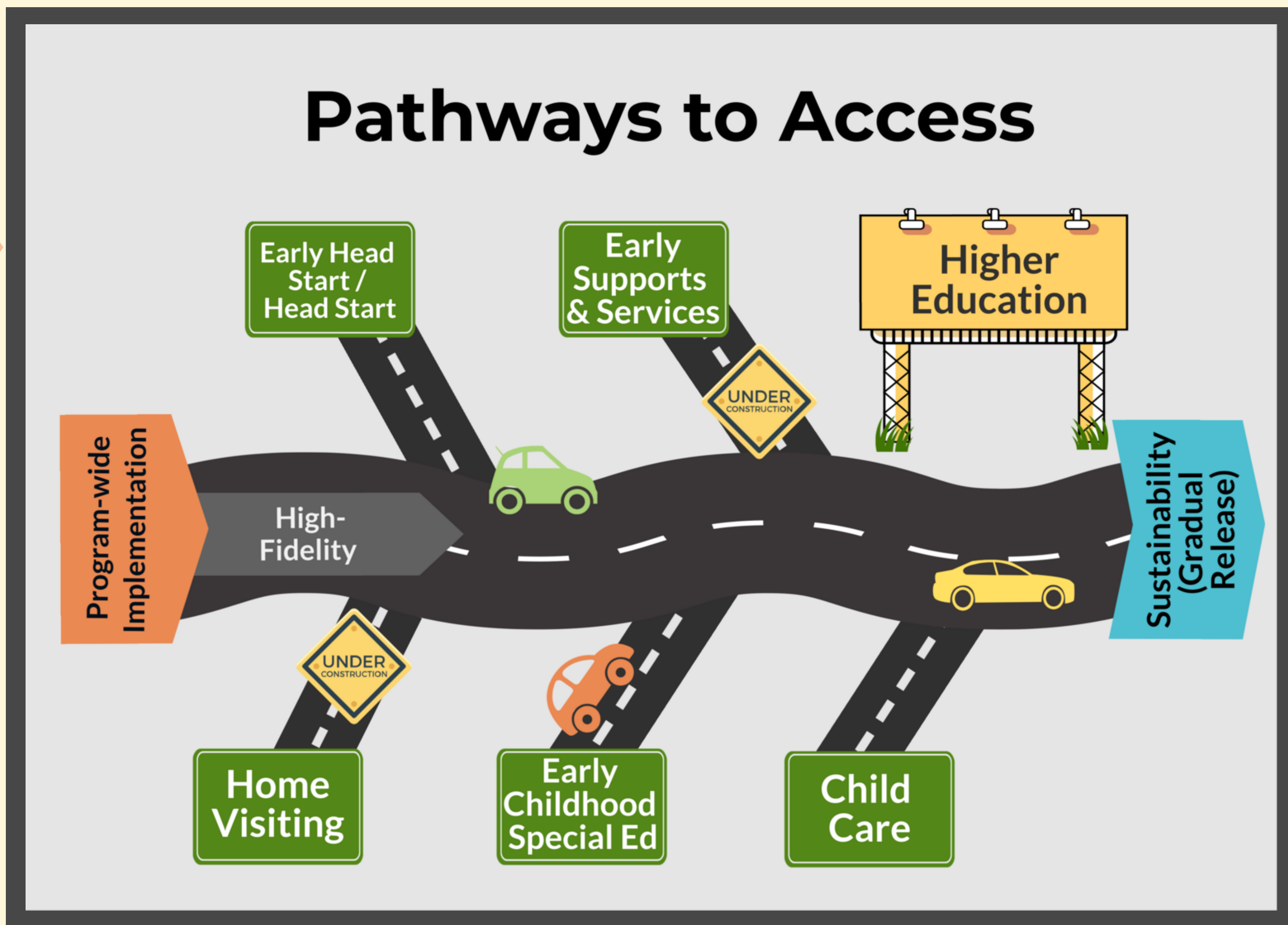
35

Child Care Implementation Sites

20

programs completed the Readiness Series

In March 2023, Family Centered Early Supports and Services began their exploration of Pyramid Model.



The Pyramid Model pathway on the Granite Steps for Quality (GSQ) provides child care programs with the resources and coaching support needed to implement the framework program-wide with fidelity. GSQ is NH's Quality Recognition and Improvement System (QRIS), a voluntary system that promotes and acknowledges continuous quality improvement. The SLT seeks to build on the success of the PM pathway by identifying as one of its key action plan goals the development of clear access pathways for all early childhood care and education settings to achieve program-wide Pyramid Model implementation.

## Looking Ahead...

Expansion to NH Birth to 3: Family Centered Early Supports and Services

Family Engagement

Identifying additional funding sources and "home" for PM implementation in NH

This report was developed by the SLT's Communication and Public Relations Workgroup with support from PTAN and the Pyramid Model Consortium.

## Stay Connected!

Follow us on Facebook



Subscribe to our e-newsletter



Visit our Webpage



To learn more about Pyramid Model implementation in New Hampshire contact Joan Izen [joan.izen@gmail.com](mailto:joan.izen@gmail.com)



## Special Thank You to Debra Nelson!

Many thanks to Debra Nelson, former Bureau Chief, NH DHHS Bureau of Child Development and Head Start Collaboration for her clear vision and enduring commitment to Pyramid Model implementation in NH. Debra was a true leader in the early efforts to garner State support to become a Pyramid Model State and she continued to lead by example, embedding Pyramid Model into contracts and expectations. Debra resigned her position in October 2023. We wish her well and thank her for her true leadership in establishing and promoting NH Pyramid Model implementation.