

Pyramid Model Consortium

WORLDWIDE





THE WORK THAT WE DO

The Pyramid Model is a positive behavioral intervention and support (PBIS) framework that uses systems-thinking and implementation science to promote evidence-based practices. We created *The Pyramid Model for Supporting Social Emotional Competence in Infants and Young Children* to help early educators build skills for supporting nurturing and responsive caregiving, creating learning environments, providing targeted social-emotional skills, and supporting children with behaviors perceived as challenging. Finally, we provide local, national, and global early childhood programs with comprehensive training and technical assistance, proven delivery methods, and free resources to support implementation.

Vision Statement

We envision equitable and inclusive environments that nurture and promote all infants' and young children's social emotional development and learning through the sustained high-fidelity implementation of the Pyramid Model.

Mission Statement

The Pyramid Model Consortium promotes equity and inclusion through the dissemination, sustainability, scale-up and high-fidelity use of the Pyramid Model for Promoting Social Emotional Competence in Infants and Young Children.



**THE
PYRAMID MODEL
CONSORTIUM**

Supporting Early Childhood PBIS



WHAT WE OFFER

TECHNICAL ASSISTANCE

IMPLEMENTATION SUPPORT

COACHING AND MENTORING

PROFESSIONAL DEVELOPMENT

ePYRAMID COURSES

DATA COLLECTION AND ANALYSIS

ADDITIONAL RESOURCES



TECHNICAL ASSISTANCE (TA)

The Pyramid Model Consortium offers support to your current or future State Leadership Team (SLT), guiding the development of a vision, mission and actionable plan to implement, scale, and sustain the Pyramid Model framework. Pyramid Model Practices are designed to advance equity, improve behavior policies, and strengthen family and child engagement. They also promote data-informed decision-making and support the full inclusion of children with developmental delays and disabilities across the state, community, and/or country.





IMPLEMENTATION AND SCALE-UP

The Pyramid Model Consortium (PMC) offers tailored technical assistance (TA) at multiple levels to align with your specific goals, resources, political context, collaborative partnerships, and implementation capacity. Support for State Leadership Teams (SLTs) is grounded in the four Essential Structures of Pyramid Model implementation:

- A committed and representative State Leadership Team
- A coordinated Professional Development Network of Program Coaches and Trainers
- A network of Implementation and Mentor Sites
- A robust system for Data and Evaluation

Together, these structures form a strong foundation for effective and sustainable statewide Pyramid Model efforts.



PMC incorporates the following evidence-based strategies across all of its technical assistance efforts:

- **Implementation Science:** provides PMC with a stage-based process to implement TA in a way that yields optimal results and constantly works towards sustainability. The four stages of implementation science are exploration, installation, initial implementation, and full implementation/sustainability (NIRN; ECTA; FPG).
- **Statewide Implementation Guide (SIG):** The SIG is a tool outlining the process for implementing evidence-based practices statewide and is based on results and evidence from the multi-year Pyramid Model implementation initiative in 25 states. The SIG includes tools, materials, and examples derived from the Pyramid Model.
- **Roadmap to Statewide Implementation of the Pyramid Model:** The Roadmap is written for use by a cross-sector team that provides guidance and coordination of the systems needed to implement, scale, and sustain the Pyramid Model framework. Your Pyramid Model Coordinator and SLT, with facilitation and guidance from PMC, may utilize the Roadmap to determine readiness for implementation, or next steps needed in the implementation process.



IMPLEMENTATION AND SCALE-UPTA OPTIONS

General Technical Assistance

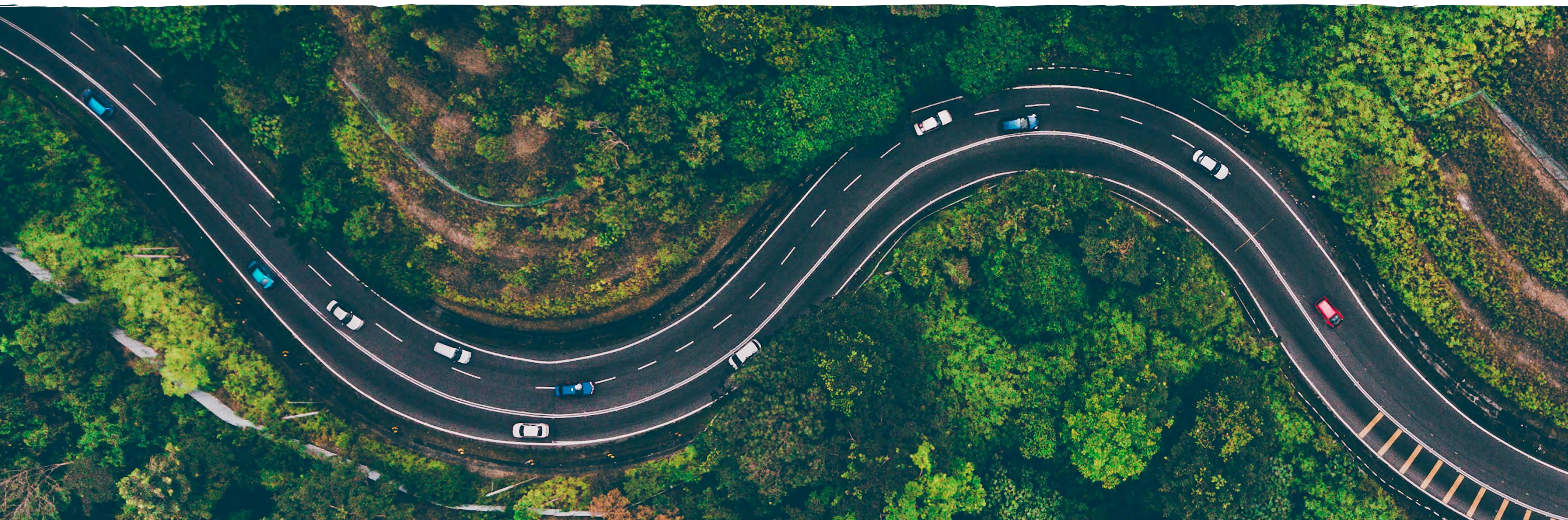
General TA offers broad-based information designed for a wide audience. The Pyramid Model Consortium (PMC) provides general TA on a range of foundational topics, including implementation science, Pyramid Model practices, equity, culturally responsive practices, trauma-informed care, inclusion, and practice-based coaching. While these resources—available on both the PMC and NCPMI websites—are not customized to the unique needs of a State Leadership Team (SLT), they serve as valuable tools for states to assess their understanding of key strategies and determine their readiness to pursue systematic implementation of the Pyramid Model framework.

Examples of General TA include:

For individuals: One of PMC’s most sought-after general technical assistance offerings is the ePyramid courses—an on-demand online training program tailored specifically for the early childhood workforce.

For small groups: Access to Community Conversations, Pyramid Leadership and Networking (PLAN) Day, and other collaborative opportunities that connect Pyramid Model leaders from diverse states, communities, and countries. These events promote meaningful networking, shared learning, and collective growth in implementation efforts.

For State Leadership Teams (SLTs): Engage in exploratory conversations about forming a strong, representative SLT and gain access to valuable resources. Building an effective State Leadership Team is critical to successful Pyramid Model implementation in early learning programs. PMC offers initial free consultations to assess your needs and support your team’s development.





IMPLEMENTATION AND SCALE-UP TA OPTIONS

Enhanced Technical Assistance

Enhanced Technical Assistance (TA) offers individualized, customized support tailored to the unique needs of a state, community, or country. Building on the foundational topics covered under General TA, this support can be provided to a single entity or to a small group collaborating across multiple entities. Enhanced TA may include one-time, intensive events such as long-term strategic planning sessions, or a series of meetings conducted over a defined period. These sessions can be delivered via conference calls, webinars, or in-person events, depending on the goals and capacity of the participants.

Examples of enhanced TA include the following:

For individuals: Enhanced TA for individuals may include participation in a learning cohort with participants from a variety of states, communities, and/or countries. These learning cohorts are focused on the ePyramid courses, where participants engage in a series of virtual coaching sessions aimed at supporting the practical application and successful implementation of the course content.

For small groups: Create a Community of Practice (CoP) designed for your specific audience, such as Pyramid Model Coordinators, State Leadership Team Facilitators, Program Coaches, Internal Coaches, Behavior Coaches, or Data Specialists—offering peer-to-peer learning, shared problem-solving, and ongoing professional growth.

For State Leadership Teams (SLTs): Meet with an SLT Consultant for hands-on technical assistance tailored to support your current implementation framework. Your consultant will collaborate with you over a defined period of time to establish a clear, standardized approach to implementation and foster cross-collaborative decision-making. SLT Consultants partner with new, existing, or re-engaged State Leadership Teams to develop data-informed action plans that address your specific needs. Support is customized to your SLT’s priorities, whether focused on strengthening team health, utilizing Pyramid Model data effectively, building a Professional Development Network, or other identified goals.





IMPLEMENTATION AND SCALE-UPTA OPTIONS

Enhanced Technical Assistance cont.

Enhanced TA for individuals, small groups, or SLTs might also include customized support around any of the following:



Educational Equity: PMC champions policies and practices that advance equity, diversity, and the full inclusion of all young children and their families within early care and education settings. Tools such as the *Pyramid Model Equity Coaching Guide* and the *Pyramid Model State Leadership Team Guidance for Preventing Suspension and Expulsion and Promoting Equitable, Inclusive, and Culturally Responsive Practices* support the implementation process by helping your State Leadership Team identify equity concerns and develop effective strategies to address them.



Suspension and Expulsion: Exclusionary practices, which disproportionately affect children of color, deny valuable learning opportunities and hinder healthy development. Eliminating all forms of exclusion is both urgent and essential to ensuring that every child is prepared for lifelong success. With technical assistance from PMC, your center-based programs can learn and implement effective strategies to eliminate suspension and expulsion in early childhood settings.



Coaching: Practice-Based Coaching is essential for the successful implementation of Pyramid Model practices. State Leadership Teams should have a strong understanding of the cyclical and ongoing nature of this coaching approach. Coaching consultation is available for a variety of settings, including center-based early childhood programs, Infant Mental Health programs (such as parent-child groups and in-home visiting), family childcare programs, and Early Intervention programs.



BIRS: The Behavior Incident Report System (BIRS) is a tool for collecting and analyzing behavior incidents within early childhood programs. It captures detailed information that supports data-driven decision-making to improve support for teachers, staff, children, and families. Monthly summaries provide formative insights into factors influencing behavioral incidents, while also offering summative data on incident frequency. Additionally, BIRS analyzes potential equity concerns by examining disproportionality across race, ethnicity, IEP status, gender, and dual language learner status. (NCPMI collaborates with PMC to provide technical assistance related to BIRS.)



IMPLEMENTATION AND SCALE-UPTA OPTIONS

Intensive Technical Assistance

Intensive Technical Assistance (TA) is delivered at the State Leadership Team (SLT) level, rather than to individuals or small groups. This involves establishing an ongoing, sustained partnership between your entity and PMC, supported by a dedicated SLT Consultant. Intensive TA can be provided to SLTs who are just getting started, those that have been in existence for years, and/or those who are rebooting or re-engaging in implementation efforts. Initially, PMC will provide free consultation to assess your needs and to develop a plan that will work for your team.

This level of technical assistance is highly individualized and comprehensive, designed to drive meaningful changes in policies, programs, and practices that lead to improved outcomes. TA is guided by the specific goals of your state, community, or country and is carefully aligned with the strategic priorities of your State Leadership Team (SLT). Intensive TA can be delivered virtually, in person, or through a blended approach—based on your unique needs and preferences.

Support is structured around the four Essential Structures of Pyramid Model implementation, utilizing stage-based implementation science activities to promote sustainable progress. The four Essential Structures include the State Leadership Team, the Professional Development Network of Program Coaches and Trainers, Implementation and Mentor Sites, and Data & Evaluation systems.

State Leadership Team: Establishing a strong, representative State Leadership Team (SLT) is essential for the successful implementation of the Pyramid Model framework. The primary purpose of the SLT is to ensure support and resources are available to those implementing the practices so they can use the practices as intended. PMC can support you in building an SLT equipped to lead and sustain effective implementation across early learning programs.

Key components of developing a strong SLT include:

- Identifying diverse and representative membership
- Crafting a clear mission and vision
- Establishing effective meeting structures
- Developing an actionable implementation plan
- Coordinating efforts and securing funding
- Enhancing communication and visibility
- Ensuring meaningful family participation and engagement

With PMC's guidance, your SLT can become a driving force for high-quality, equitable early childhood systems.



IMPLEMENTATION AND SCALE-UPTA OPTIONS

Intensive Technical Assistance cont.

Implementation and Mentor Sites: Implementation Sites are local sites or programs selected for the initiative by the State Leadership Team (SLT). Sites receive training and coaching on the implementation of the Pyramid Model practices, as well as support on collecting and reporting data on outcomes.

Key components of developing Implementation Sites include:

- Developing readiness criteria
- Developing recruitment and selection processes
- Assigning coaching supports
- Developing timelines for community wide implementation
- Developing capacity of the PDN to support the scale-up plan

Professional Development Network of Program Coaches and Trainers: The Professional Development Network (PDN) of Program Coaches and Trainers is comprised of experts in professional development who provide training and coaching to support implementation sites and build personnel capacity. The PDN delivers high-quality training to deepen understanding and application of evidence-based practices and offers coaching to ensure high-fidelity implementation across sites.

Key components of the PDN include:

- Developing a network of specialists to provide training and coaching around the Pyramid Model practices.
- Developing a process to recruit, train, and provide ongoing support to the PDN.
- Collecting data around the activities of the PDN and engaging in data-informed decision making around that data set.
- Developing a scale-up plan to ensure the PDN has capacity to meet the needs of implementation sites and communities.

Data and Evaluation: The Data and Evaluation System is a comprehensive set of tools and processes designed to support data-informed decision making across all structures and stages of the State Leadership Team’s (SLT) work. These systems are essential for documenting and ensuring high-quality, high-fidelity implementation of Pyramid Model practices.

The data collected plays a critical role in ongoing planning and strategic decision making. Effective data and evaluation systems help determine whether key benchmarks are being met, whether coaching is improving practitioner skills, whether programs are reaching implementation goals, and whether desired outcomes for children, families, and practitioners are being achieved.



IMPLEMENTATION AND SCALE-UPTA OPTIONS

Intensive Technical Assistance cont.

Key components of developing a strong **Data and Evaluation system** include:

- Ensuring all implementation sites and communities have access to high-quality training on data systems and tools, and that they consistently submit the agreed-upon data.
- Supporting the SLT in regularly engaging in data-informed decision making across all components of Pyramid Model implementation.
- Utilizing the **State Leadership Team Benchmarks of Quality (SLT BoQ)** to guide ongoing action planning. The SLT BoQ is rooted in implementation science, helping to bridge the gap between evidence-based practices and their high-fidelity implementation.
- Creating an annual written report that documents and highlights the outcomes of Pyramid Model implementation efforts.



Technical Assistance Cost

Intensive Technical Assistance: One year of Technical Assistance	\$35,000
---	----------



Enhanced Technical Assistance: One year of Technical Assistance	\$35,000
--	----------



PMC may provide State, Community, and/or Program technical assistance on an as needed bases. These agreed upon hours can vary on topic or the need of the requesting entity.	\$1750 per day (8 hours) \$218.75 an hour
--	--



Training and technical assistance is provided to a district, region or program to establish high fidelity implementation sites of the Pyramid Model.	Cost based on number of implementing programs
--	---



PROGRAM IMPLEMENTATION & COACHING

Program-wide implementation of the Pyramid Model refers to a systemic effort within a program for high-quality Pyramid Model implementation.

Along with coaching (internal and program-based) these options are what help build the systems and sustainability of Pyramid Model implementation.





PROGRAM-WIDE IMPLEMENTATION

Program-wide implementation of the Pyramid Model refers to a systemic effort within a program for high-quality Pyramid Model implementation. In program-wide implementation, a leadership team guides the implementation process and develops the support and infrastructure needed to ensure that implementation of the Pyramid Model can occur within the classrooms, community settings and homes where services are provided to children and their families. The Leadership Team, with representation from program administrators, practitioners and coaches, is focused on the ongoing process of supporting the implementation of the Pyramid Model and using data-informed decision-making to guide implementation efforts and monitor outcomes.

Program-wide implementation might also be called Program-Wide Positive Behavior Intervention and Support (PW-PBIS), Early Childhood Positive Behavior Support (EC-PBS) or a Multi-Tiered Systems of Support (MTSS) to address social, emotional, and behavioral needs.

The program-wide implementation model ensures that programs are attending to both the implementation of evidence-based practices and the development of the infrastructure to support the sustainable implementation of those practices. Programs that have used the Pyramid Model framework have experienced the following:

- Reductions in child behaviors perceived as challenging
- Increases in children's social skills
- Increased satisfaction of program staff and families
- Elimination of suspension and expulsion
- Increases in teachers competence and confidence in the support of children
- Positive changes in classroom and program climate
- Sustained implementation of the Pyramid Model

What is Involved in the Program-Wide Implementation Process?

- The Leadership Team will attend a multiple day training on program-wide implementation to develop their implementation plan.
- Staff in the program receive training on the Pyramid Model and coaching for implementation within their classrooms.
- A coach receives training on the use of Practice-Based Coaching and how to support staff as they begin Pyramid Model implementation.
- A behavior specialist receives training on how to guide the individualized, intensive intervention process.
- The majority of staff (80%) agree that they want to be a part of program-wide implementation, although the program might begin their efforts in a few classrooms or with a few early interventionist initially.
- The program collects ongoing data on program implementation and outcomes, coaching implementation and outcomes, and child implementation and outcomes.



PROGRAM-WIDE IMPLEMENTATION

PROGRAM-WIDE LEADERSHIP LAUNCH - CLASSROOM-BASED | \$3500

The Program-Wide Leadership training launches participants into actively beginning to implement the Pyramid Model Framework across all facets of their program. Participants in this training score each critical element of the Early Childhood Benchmarks of Quality, learn more about that critical element, then work together to identify possible next steps for their program. As a result of this session each leadership team will leave with a completed Benchmarks of Quality and an implementation plan. This event serves as the "launching" point to installing the Pyramid Model Program-wide in early learning environments.

Critical Elements of the Early Childhood Benchmarks of Quality:

- Leadership Team
- Staff Buy-In
- Family Engagement
- Program-wide Expectations
- Professional Development and Staff Support Plan
- Procedures for Responding to Challenging Behavior
- Monitoring Implementation and Outcomes

No participant limit	Material Cost: \$20 per person	In-person events have additional travel costs
----------------------	-----------------------------------	---

Learning Objectives:

- Review the seven critical elements of the Benchmarks of Quality (BoQ).
- Identify potential challenges of program-wide Pyramid Model implementation and brainstorm solutions for each critical element.
- Develop an action plan for your next steps.

Prerequisites:

Knowledge of Pyramid Model framework

Targeted Audience:

Early Childhood Program Leadership Team For Center-based, Public School, and Head Start settings.



PROGRAM-WIDE IMPLEMENTATION

PROGRAM-WIDE LEADERSHIP LAUNCH - EARLY INTERVENTION | \$3500

This launch is a working meeting for implementation site leadership teams who will be active in guiding implementation within a site or program. Content includes critical elements of program-wide implementation, implementation strategies, leadership team responsibilities, staff support, professional development considerations, coaching practitioners, systems and procedures to support children with challenging behavior, family engagement, and data-based decision-making. Leadership teams will leave with an implementation plan.

No participant limit	Material Cost: \$20 per person	In-person events have additional travel costs
----------------------	--------------------------------	---

Learning Objectives:

- Understand the foundations of the Pyramid Model framework in Part C.
- Learn how implementation science elements will support the implementation of the Pyramid Model in their Part C program.
- Complete the Early Intervention Benchmarks of Quality and a develop a comprehensive implementation plan for each program.

Prerequisites:

Knowledge of Pyramid Model framework

Targeted Audience:

Early Intervention/Part C Program Leadership Team

FAMILY CHILD CARE HOME PROGRAM-WIDE LAUNCH | \$1750

Coming Soon!



PROGRAM IMPLEMENTATION COACH PROGRAM-WIDE

PROGRAM IMPLEMENTATION COACH TRAINING | \$3500

In this 2 part series (10 hour commitment) participants will learn about the role of the Program Implementation Coach in Pyramid Model implementation. They will discuss the basic components of implementation science and how it relates to the development of sustainable systems while also learning new strategies and skills to support the forming of implementation site leadership teams. Participants will also learn about the Early Childhood Benchmarks of Quality and identify strategies for its facilitation as they learn about each critical element in depth.

No participant limit	Material Cost: \$20 per person	In-person events have additional travel costs
----------------------	--------------------------------	---

Learning Objectives:

- Learn about the role of a Program Implementation Coach in Pyramid Model implementation.
- Understand the basic components of implementation science and how it relates to developing sustainable systems.
- Learn new strategies and skills to support the forming of leadership teams, ensuring broad and diverse representation.
- Learn strategies for facilitating the Benchmarks of Quality.
- Learn about each critical element of the Benchmarks of Quality and how to use data to support leadership teams in building sustainable systems and infrastructure.

Prerequisites:

Pyramid Model Practices Training

Targeted Audience:

Program Implementation Coaches
Master Cadre Members

PROGRAM IMPLEMENTATION COACH COLLABORATION CALLS | \$2625

In order to support Program Implementation Coaches as they in turn support programs, PMC provides monthly (12) calls with identified Program Implementation Coaches to continue professional development, problem-solve, reflect and celebrate program successes. These 1-hour calls are facilitated by a National Consultant or Mentor Coach.

Learning Objectives:

Deepening knowledge and expertise of the selected topic by actively sharing best practices, identifying challenges, collaborating on solutions, and promoting continuous learning through peer-to-peer interaction and knowledge exchange.

Prerequisites:

Program Implementation Coach Training
Pyramid Model Practices Training

Targeted Audience:

Program Coaches
Master Cadre Members



Program Implementation Coaches will also need to participate in additional training to fully support Program-wide Implementation.

All of the topics listed here are described in more depth, including descriptions, objectives and cost, in the Professional Development section of this menu.

PROGRAM IMPLEMENTATION COACH TRAINING GRID PER PROGRAM TYPE

The grid below outlines the training and professional development a Program Implementation Coach needs to support Program-wide Pyramid Model implementation. This training schedule is typically completed in year one of implementation.

PRESCHOOL	INFANT TODDLER	FAMILY CHILD CARE HOMES	EARLY INTERVENTION
Program Coach Training	Program Coach Training	Program Coach Training	Program Coach Training
Preschool Modules	Infant Toddler Modules	Family Child Care Modules	Early Intervention Modules
Infant Toddler Module Overview	Preschool Module Overview		Prevent-Teach-Reinforce for Families
Practice-Based Coaching	Practice-Based Coaching	Practice-Based Coaching	Practice-Based Coaching
Data as a Foundation	Data as a Foundation	Data as a Foundation	Data as a Foundation
TPOT Reliability	TPITOS Reliability	Coming Soon!	EIPPF
PIDS Training	PIDS Training	PIDS Training	PIDS Training
BIRS Training	BIRS Training	BIRS Training	
Program Coach Collaboration Calls	Program Coach Collaboration Calls	Program Coach Collaboration Calls	Program Coach Collaboration Calls
Approx. 12 Days of PD	Approx. 12 days of PD	Approx. 9 days of PD	Approx. 9 days of PD

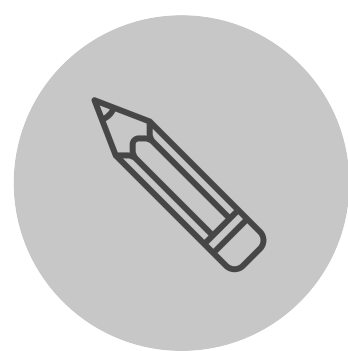
Other Pyramid Model professional development topics can be completed in addition to the trainings listed in the grid but we recommend Program Implementation Coaches complete these core trainings to support successful Program-Wide implementation.



PROGRAM-WIDE IMPLEMENTATION TEAM MEMBERS

Besides Program Implementation Coaches, there are other team members to keep in mind when building your programs professional development calendar as well as selecting members of the leadership team. Here are some roles to consider and what PD they will need to support program-wide implementation.

*NOTE: **All team members** should be trained in Pyramid Model Practices.*



TEACHER/PRACTITIONER

This could also include paraprofessionals and family child care providers.

- Targeted Strategies for Successful Inclusion of Children with Disabilities
- Linking Early Literacy and Social Emotional Development



INTERNAL OR INSTRUCTIONAL COACH

Also known as a Practice-Based Coach, this team member will need to be trained in the following topics:

- TPOT and/or TPITOS Reliability and/or EIPPF training
- Practice-Based Coaching



BEHAVIORAL SPECIALIST

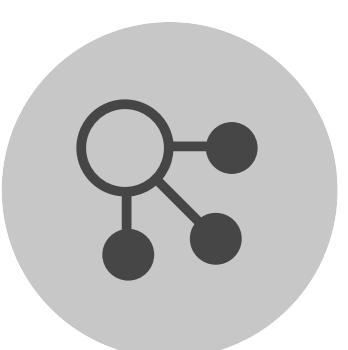
This title may vary from program to program. This person assists in writing behavioral support plans. They should participate in these training topics:

- Prevent-Teach-Reinforce for Young Children (PTR-YC) AND/OR
- Prevent-Teach-Reinforce for Families (PTR-F)
- Behavior Incident Report (BIRS) training



PARENT EDUCATORS

- Positive Solutions for Families (PSF)
- Linking Early Literacy and Social Emotional Development



RELATED SERVICE PROVIDERS

This could also include social workers, mental health professionals, inclusion coaches, and/or disability coaches partnering with your program

- Targeted Strategies for Successful Inclusion of Children with Disabilities
- Linking Early Literacy and Social Emotional Development



PROGRAM-WIDE IMPLEMENTATION TRAINING CALENDAR

To help guide your program in what trainings are essential to support the implementation of the Pyramid Model, we have mapped out a recommended sequence of topics for programs. Other desired or targeted topics can be completed in addition to these recommended events.

PRESCHOOL

- Leadership Launch
- Foundational Practices Training
- Practice-Based Coach Training
- TPOT Reliability Training
- Data (PIDS, BoQ, BIRS)
- Prevent-Teach-Reinforce for Young Children
- Targeted practices to Support Inclusion
- Positive Solutions for Families
- Linking Social Emotional Learning and Literacy

INFANT TODDLER

- Leadership Launch
- Foundational Practices Training
- Practice-Based Coach Training
- TPITOS Reliability Training
- Data (PIDS, BoQ, BIRS)
- Prevent-Teach-Reinforce for Families
- PIWI

FAMILY CHILD CARE

- Leadership Launch
- Foundational Practices Training
- Practice-Based Coach Training
- TPOT/TPITOS Reliability Training (Coming soon a tool specific to FCC)
- Data (PIDS, BoQ, BIRS)
- Targeted practices to Support Inclusion
- Positive Solutions for Families
- Linking Social Emotional Learning and Literacy

EARLY INTERVENTION

- Leadership Launch
- Foundational Practices Training
- Practice-Based Coach Training
- Early Interventionist Pyramid Practices Fidelity Instrument (EIPPF) Training
- Data (PIDS, BoQ)
- Prevent-Teach-Reinforce for Families

Topics listed here can be found with more detail in the Professional Development section of the menu.



PROFESSIONAL DEVELOPMENT

Pyramid Model Consortium provides a wide range of training and professional development opportunities for individuals, programs, communities, and states/territories/provinces/countries.

Content can be provided in a number of ways to meet the needs of teams/programs:

- In-Person
- Virtual - Zoom
- Hybrid - In-person and Zoom
- Recorded Webinar

Training events include the daily event rate, materials costs, and travel costs, if event is in-person.

For virtual events, materials are shared electronically via google folder or dropbox.





PRESCHOOL CONTENT **FOUNDATIONAL TRAINING**

PRACTICES TRAINING | \$5250

The Pyramid Model Preschool Module Series is a 6-part series dedicated to understanding, teaching, and providing practices to support the social and emotional developmental needs of preschoolers.

- Nurturing and Responsive Relationships
- High-Quality, Supportive Environments
- Teaching Social-Emotional Skills
- Individualized Teaching of Social-Emotional Skills
- Addressing Challenging Behavior
- Overview of Prevent Teach Reinforce for Young Children (PTR-YC)

Module 1, *Nurturing and Responsive Relationships*, is the foundation of the Pyramid Model and focuses on practices for building relationships with children, promoting relationships between children, relationships with families, and relationships with team members.

Module 2, *High-Quality Supportive Environments*, will focus on the practices for establishing high-quality supportive classroom environments that promote social-emotional skill development and prevent challenging behavior.

Module 3, *Teaching Social-Emotional Skills*, focuses on how to promote social-emotional development with practices for teaching friendship skills, emotional literacy, self-regulation, and problem-solving.

Module 4, *Individualized Teaching of Social-Emotional Skills*, will guide practitioners in how to individualize instruction on social-emotional skills for children who need more targeted supports. Practices include: teaching systematically, peer-mediated intervention, planning for embedded instruction, and progress monitoring.

Module 5, *Addressing Challenging Behavior*, provides the practices for understanding child challenging behavior, how to respond to challenging behavior, de-escalating behavior, and the components of developing a behavior support plan for children with persistent challenging behavior.

Module 6, *Overview of PTR-YC*, will teach practitioners about the steps of PTR-YC and how it is used as a manualized process for conducting a functional behavioral assessment and developing a behavior support plan.

No participant limit	Material Cost: \$20 per person	In-person events have additional travel costs
----------------------	--------------------------------	---

This series is designed to be presented in many ways, over a varying amount of days and hours.

Learning Objectives:

- Describe the basic components of the Pyramid Model for Promoting Social-Emotional Competence in preschool aged children.
- Become familiar with the teachings and practices in each module and how they relate to social-emotional development for preschoolers.
- Learn ways to embed social-emotional teaching throughout the day to foster the development of needed skills.

Prerequisites:

None

Targeted Audience:

All Early Childhood staff and team members



INFANT TODDLER CONTENT FOUNDATIONAL TRAINING

PRACTICES TRAINING | \$5250

The Pyramid Model Infant-Toddler Module Series, is a 8-part series dedicated to understanding, teaching, and providing practices to support the social and emotional developmental needs of infants and toddlers.

- Understanding Social-Emotional Development
- Focusing on Relationships
- Responsive Routines, Schedules, & Environments
- Understanding Behavior
- Teaching About Feelings
- Positive Peer Interactions
- Individualized Teaching
- Challenging Behavior

Module 1, *Understanding Social-Emotional Development*, will acquaint participants with the Pyramid Model, introduce important terms that will be used throughout the training modules, and lay a foundation to better understand the role caregivers play in young children’s social-emotional development.

Module 2, *Focusing on Relationships*, this module will explore the importance and complexities of developing relationships between caregivers, families, and children.

Module 3, *Responsive Routines, Schedules, & Environments*, will support learning about the benefits of being intentional about establishing daily routines and setting up the environment.

Module 4, *Understanding Behavior*, participants will learn how to use observation to better understand infant toddler behavior.

Module 5, *Teaching About Feelings*, will explore how the development of emotional literacy looks within an early childhood setting and shares a variety of strategies teachers can use to support and teach the young early learners in our care about feelings..

Module 6, *Positive Peer Interactions*, will focus on how to facilitate positive peer interactions and support the development of social and friendship skills.

Module 7, *Individualized Teaching*, will help participants learn to identify and address delays in social-emotional development.

Module 8, *Challenging Behaviors*, will focus on identifying, defining, and understanding the use of challenging behaviors for infants and toddlers.

No participant limit

Material Cost: \$15 per person

In-person events have additional travel costs

Learning Objectives:

- Describe the basic components of the Pyramid Model for Promoting Social-Emotional Competence in infants and toddlers.
- Become familiar with the teachings and practices in each module and how they relate to social-emotional development for infants and toddlers.
- Learn ways to embed social-emotional teaching throughout the day to foster the development of needed skills for infants and toddlers.

Prerequisites:

None

Targeted Audience:

All Early Childhood staff and team members

This series is designed to be presented in many ways, over a varying amount of days and hours.



BIRTH TO 5 CONTENT FOUNDATIONAL TRAINING

Birth to 5 content does not dive as deep into age specific practices but more of an overview of the practice for all early childhood ages.

PRACTICES TRAINING | \$5250

This three-day (18 hour) training focuses on evidence-based practices as part of a conceptual framework for promoting social and emotional development of children **ages 0 through 5 years**.

No participant limit

Material Cost: \$20 per person

In-person events have additional travel costs

Learning Objectives:

- Describe the basic components of the Pyramid Model for Promoting Social-Emotional Competence in preschool aged children.
- Become familiar with the teachings and practices in each module and how they relate to social-emotional development for preschoolers.
- Learn ways to embed social-emotional teaching throughout the day to foster the development of needed skills.

Prerequisites:

None

Targeted Audience:

All Early Childhood staff and team members





FAMILY CHILD CARE CONTENT FOUNDATIONAL TRAINING

PRACTICES TRAINING | \$5250

These modules offer an in-depth exploration of the Pyramid Model framework within Family Child Care (FCC) settings, emphasizing the unique aspects of FCC such as the home environment, diverse age spans, and family collaboration and engagement. Participants will learn to implement culturally relevant practices that support the social-emotional development of mixed age groups of children from infancy to school age within FCC settings. We will explore topics such as teaching social-emotional skills, addressing challenging behaviors, collecting meaningful data, and using effective organization, time management, and collaboration strategies in FCC settings.

This content has been broken down into 12 shorter modules:

- Module 1: Overview of the Pyramid Model in Family Child Care
- Module 2: Social and Emotional Development for Family Child Care Providers
- Module 3: Family Engagement and Family-Centered Practices
- Module 4: Cultural Responsiveness and Family Child Care
- Module 5: Nurturing and Responsive Relationships
- Module 6: Creating a High-Quality, Supportive Environment for All Ages
- Module 7: Social-Emotional Teaching
- Module 8: Social-Emotional Teaching – Friendship Skills and Emotional Literacy
- Module 9: Social-Emotional Teaching – Self-Regulation and Problem-Solving Skills
- Module 10: Addressing Challenging Behaviors
- Module 11: Collecting and Using Data in Family Child Care Homes
- Module 12: Time Management, Organization, Wellness, and Teaming

No participant limit

Material Cost:
\$20 per person

In-person events have additional travel costs

Learning Objectives:

- Describe how the Pyramid Model framework operates within FCC Care settings, focusing on key elements like home environments, diverse age spans, and family engagement.
- Develop culturally relevant strategies for teaching social-emotional skills across mixed ages within FCC emphasizing the continuum of social emotional development.
- Identify child-centered practices that effectively address challenging behaviors by recognizing their underlying function, focus on teaching replacement behaviors, and are trauma-informed and can be implemented in FCC.
- Describe practical techniques for collecting and utilizing data throughout the day in FCC, organizing and managing time efficiently, and fostering collaborative partnerships with families and other stakeholders.

Prerequisites:

None

Targeted Audience:

Family Child Care providers and support team members

This series is designed to be presented in many ways, over a varying amount of days and hours.



EARLY INTERVENTION CONTENT FOUNDATIONAL TRAINING

PRACTICES TRAINING | \$3500

These modules guide practitioners through the Early Intervention Pyramid Model Practices Training. This training will help individuals identify and understand the Pyramid Model practices within the context of early intervention. The knowledge acquired from these modules will help build an awareness of what the Pyramid Model practices in early intervention are, and how to use them with more intention throughout your work with families. The modules are for anyone who is working with and coaching families with infants and toddlers. The practices identified in this training are aligned with the Early Interventionist Pyramid Practices Fidelity Instrument, also known as the EIPPF, which is a tool that can be used by early interventionist and coaches when building staff capacity in implementing high-quality Pyramid Model practices.

No participant limit	Material Cost: \$20 per person	In-person events have additional travel costs
----------------------	--------------------------------	---

Learning Objectives:

- Describe the foundational components of the Pyramid Model and its application in Part C Early Intervention.
- Identify and apply practices that promote social-emotional (SE) development in infants and toddlers.
- Strengthen caregiver-provider relationships through effective, culturally responsive communication and coaching.
- Integrate evidence-based caregiving and interaction strategies that support SE competence in young children.
- Support caregivers in understanding the meaning behind behavior and using preventative strategies to address behaviors adults may find challenging.
- Conduct high-quality SE assessments and use data to guide decision-making and family support.

Prerequisites:

None

Targeted Audience:

Early Interventionists
Coaches working with families with infant and toddlers

This series is designed to be presented in many ways, over a varying amount of days and hours.





FOUNDATIONAL CONTENT TRAINING OF THE TRAINER

PRESCHOOL ToT CONTENT | \$5250

This three-day training to provide instruction on the use of the Promoting Social Emotional Competence training modules for delivering high-quality training to classroom practitioners for children ages 2 through 5 years. With the use of the 6 Adult Learning Principles, our national trainer will provide a general overview of the content in the Pyramid Preschool Modules, highlighting key changes in content, terminology, and activities.

Up to 50 participants	Material Cost: \$30 per person	In-person events have additional travel costs
-----------------------	--------------------------------	---

Learning Objectives:

- Describe the basic components of training on the Pyramid Model Preschool Modules for Promoting Social-Emotional Competence.
- Become familiar with presenting/training on the teachings and practices in each module and how they relate to social-emotional development for preschoolers.
- Learn ways to help participant learn how to embed social-emotional teaching throughout the day to foster the development of needed skills.

Prerequisites:

Knowledge of Preschool
Pyramid Model Practices

Targeted Audience:

State/Program identified trainers
Program Implementation Coaches

INFANT TODDLER ToT CONTENT | \$5250

This three-day training to provide instruction on the use of the Promoting Social Emotional Competence training modules for delivering high-quality training to classroom practitioners for infants and toddler. With the use of the 6 Adult Learning Principles, our national trainer will provide a general overview of the content in the Infant Toddler Modules, highlighting key changes in content, terminology, and activities.

Up to 50 participants	Material Cost: \$30 per person	In-person events have additional travel costs
-----------------------	--------------------------------	---

Learning Objectives:

- Describe the basic components of training on the Pyramid Model Preschool Modules for Promoting Social-Emotional Competence.
- Become familiar with presenting/training on the teachings and practices in each module and how they relate to social-emotional development for preschoolers.
- Learn ways to help participant learn how to embed social-emotional teaching throughout the day to foster the development of needed skills.

Prerequisites:

Knowledge of Infant Toddler
Pyramid Model Practices

Targeted Audience:

State/Program identified trainers
Program Implementation Coaches



FOUNDATIONAL CONTENT TRAINING OF THE TRAINER

FAMILY CHILD CARE HOMES ToT CONTENT | \$5250

This three-day training to provide instruction on the use of the Promoting Social Emotional Competence training modules for delivering high-fidelity training to Family Child Care providers supporting children ages 0 through 5 years. With the use of the 6 Adult Learning Principles, our national trainer will provide a general overview of the content in the Family Child Care Modules, highlighting key practices, terminology, and activities.

Up to 50 participants	Material Cost: \$30 per person	In-person events have additional travel costs
-----------------------	--------------------------------	---

Learning Objectives:

- Describe the basic components of training on the Pyramid Model Family Child Care Modules for Promoting Social-Emotional Competence.
- Become familiar with presenting/training on the teachings and practices in each module and how they relate to social-emotional development for preschoolers.
- Learn ways to help participant learn how to embed social-emotional teaching throughout the day to foster the development of needed skills.

Prerequisites:

Knowledge of Family Child Care Pyramid Model Practices

Targeted Audience:

State/Program identified trainers
Program Implementation Coaches

EARLY INTERVENTION ToT CONTENT | \$3500

This two-day training to provide instruction on the use of the Promoting Social Emotional Competence training modules for delivering high-fidelity training to classroom practitioners for infants and toddler. With the use of the 6 Adult Learning Principles, our national trainer will provide a general overview of the content in the Early Intervention Modules, highlighting key practices and content, terminology, and activities.

Up to 50 participants	Material Cost: \$30 per person	In-person events have additional travel costs
-----------------------	--------------------------------	---

Learning Objectives:

- Describe the basic components of training on the Pyramid Model Early Intervention Modules for Promoting Social-Emotional Competence.
- Become familiar with presenting/training on the teachings and practices in each module and how they relate to social-emotional development for preschoolers.
- Learn ways to help participant learn how to embed social-emotional teaching throughout the day to foster the development of needed skills.

Prerequisites:

Knowledge of Early Intervention Pyramid Model Practices

Targeted Audience:

State/Program identified trainers
Program Implementation Coaches



TEACHING PYRAMID OBSERVATION TOOL



Developed by highly respected creators of the Pyramid Model for classrooms enrolling children 2–5 years of age, the TPOT™ is an in-depth tool that provides information on how well teachers are implementing practices related to universal, targeted, and individualized supports.

TPOT™ helps programs:

- Support effective implementation of the proven PBIS-based Pyramid model
- Promote social-emotional competence in young children
- Implement strategies to prevent and address challenging behavior
- Compare implementation across classrooms, teachers, and programs
- Identify where teachers need extra professional development and support
- Guide coaching efforts

**TPOT
Reliability is
valid for 3
years.**

RELIABILITY TRAINING | \$4600

This 2-day (9 am-4 pm) or 3-day (9 am-1 pm) reliability training will provide support for the participant to conduct classroom observations and measure fidelity of implementation of the Preschool Pyramid Model Practices.

Up to 30
participants

Material Cost:
\$50 plus shipping
per person*

In-person events have additional travel costs

** TPOT training bundle required per person*

Learning Objectives:

- Receive a comprehensive review of the complete TPOT Research Edition
- Understand the scoring methods and procedures of the TPOT through discussion and practice of scoring individual items.
- Obtain the ability to individually score an entire TPOT from video and achieve at least of 80% reliability score.

Prerequisites:

Preschool Pyramid Model Practices

Targeted Audience:

Practitioner/ Practices Coaches

Program Implementation Coaches

TRAIN THE TRAINER | \$5250

A State/Program TPOT Trainer is provided with limited authorization to provide the TPOT Reliability Training Workshop to participants within their program or state. Trainers are eligible for apply to become a State/Program TPOT Trainer if they met the following prerequisites:

- Have successfully attended and completed a TPOT Reliability Workshop and reached a minimum of 80% Interobserver Agreement.
- Uses the TPOT in your work with preschool classrooms.
- Have content expertise in Pyramid Model practices
- Have expertise in Preschool settings

The process for becoming a State/Program TPOT Trainer involves attending a 1-day State/Program TPOT Trainers workshop, as well as completing pre-workshop activities and submitting integrity check videos of TPOT training after the workshop.



TEACHING PYRAMID INFANT TODDLER OBSERVATION SCALE



Modeled after the Teaching Pyramid Observation Tool (TPOT) for Preschool Classrooms, TPITOS is for early childhood settings caring for infants and toddlers from birth to 3 years of age. Focusing on teacher practices and classroom environment variables, TPITOS measures how well your program's staff is fostering responsive, nurturing relationships with children and promoting strong social-emotional development in their earliest years.

TPITOS helps programs:

- Support effective implementation of effective practices
- Promote social-emotional competence in young children
- Identify where teachers need extra professional development and support
- Guide coaching efforts

**TPITOS
Reliability is
valid for 3
years.**

RELIABILITY TRAINING | \$4600

This 2-day (9 am- 4 pm) or 3-day (9 am- 1 pm) reliability training will provide support for the participant to conduct classroom observations and measure fidelity of implementation of the Infant Toddler Pyramid Model Practices.

Up to 30
participants

Material Cost:
\$50 plus shipping
per person*

*In-person events have additional travel costs
* TPITOS training bundle required per person*

Learning Objectives:

- Learn about the TPITOS, a measure for examining use of teacher practices for promoting infant/toddler social-emotional learning
- View and score video examples of teacher behaviors that support the social-emotional development of infants and toddlers and become familiar with our easy-to-use data sheet
- Meet certification standards for carrying out and scoring TPITOS observations (with 80% reliability agreement)

Prerequisites:

Infant Toddler Pyramid Model Practices

Targeted Audience:

Practitioner/ Practices Coaches
Program Implementation Coaches

TRAIN THE TRAINER | \$5250

A State/Program TPITOS Trainer is provided with limited authorization to provide the TPITOS Reliability Training Workshop to participants within their program or state. Trainers are eligible for apply to become a State/Program TPITOS Trainer if they met the following prerequisites:

- Have successfully attended and completed a TPITOS Reliability Workshop and reached a minimum of 80% Interobserver Agreement.
- Uses the TPITOS in your work with infant and/or toddler classrooms.
- Have content expertise in Pyramid Model practices
- Have expertise in Infant Toddler settings

The process for becoming a State/Program TPITOS Trainer involves attending a 2-session (approx. 8 hours) State/Program TPITOS Trainers workshop, as well as completing pre-workshop activities and submitting integrity check videos of TPITOS training after the workshop.



PRACTICE-BASED COACHING

Practice-Based Coaching (PBC) is a research-based coaching model that focuses on improving specific teaching practices to build the quality of teaching and learning. PBC has a long history and proven track record of providing the kind of support that leads to visible improvement in the early childhood education field.

EXPERT COACH TRAINING | \$3500

This 2-day training is designed to prepare coaches to deliver practice-based coaching to classroom practitioners who are implementing the Pyramid Model.

Up to 40 participants

Material Cost: \$12 per person

In-person events have additional travel costs



Learning Objectives:

- Identify key components of Practice-Based Coaching
- Describe characteristics of collaborative partnerships
- Practice creating goals and action plans
- Conduct focused observation based on action plans
- Prepare prompts for reflection and feedback

Prerequisites:

Pyramid Model Practices

Targeted Audience:

Practitioner/ Practices Coaches
Program Implementation Coaches

PBC COMMUNITY OF PRACTICE | \$1750

This is an opportunity for coaches to come together on a regular basis for ongoing professional development, share celebrations and struggles, and get input and insight from other coaches. Includes 8, 1-hour sessions. **More or less sessions can be requested.**

Learning Objective:

Deepening knowledge and expertise of PBC by actively sharing best practices, identifying challenges, collaborating on solutions, and promoting continuous learning through peer-to-peer interaction and knowledge exchange.

Prerequisites:

Pyramid Model Practices, PBC Expert training

Targeted Audience:

Practitioner/ Practices Coaches
Program Implementation Coaches



PRACTICE-BASED COACHING CONTINUED

PBC EQUITY GUIDE TRAINING | \$1750

This 2-part interactive webinar provides an opportunity to think deeply about engaging in coaching with an equity lens. You will reflect on your own practice, engage in small group discussions using specific protocols, become very familiar with the Equity Coaching Guide, and plan for future action.

Part 1: 3 hour Session
Part 2: 90 minute Session

Up to 40 participants | Material Cost: \$10 per person

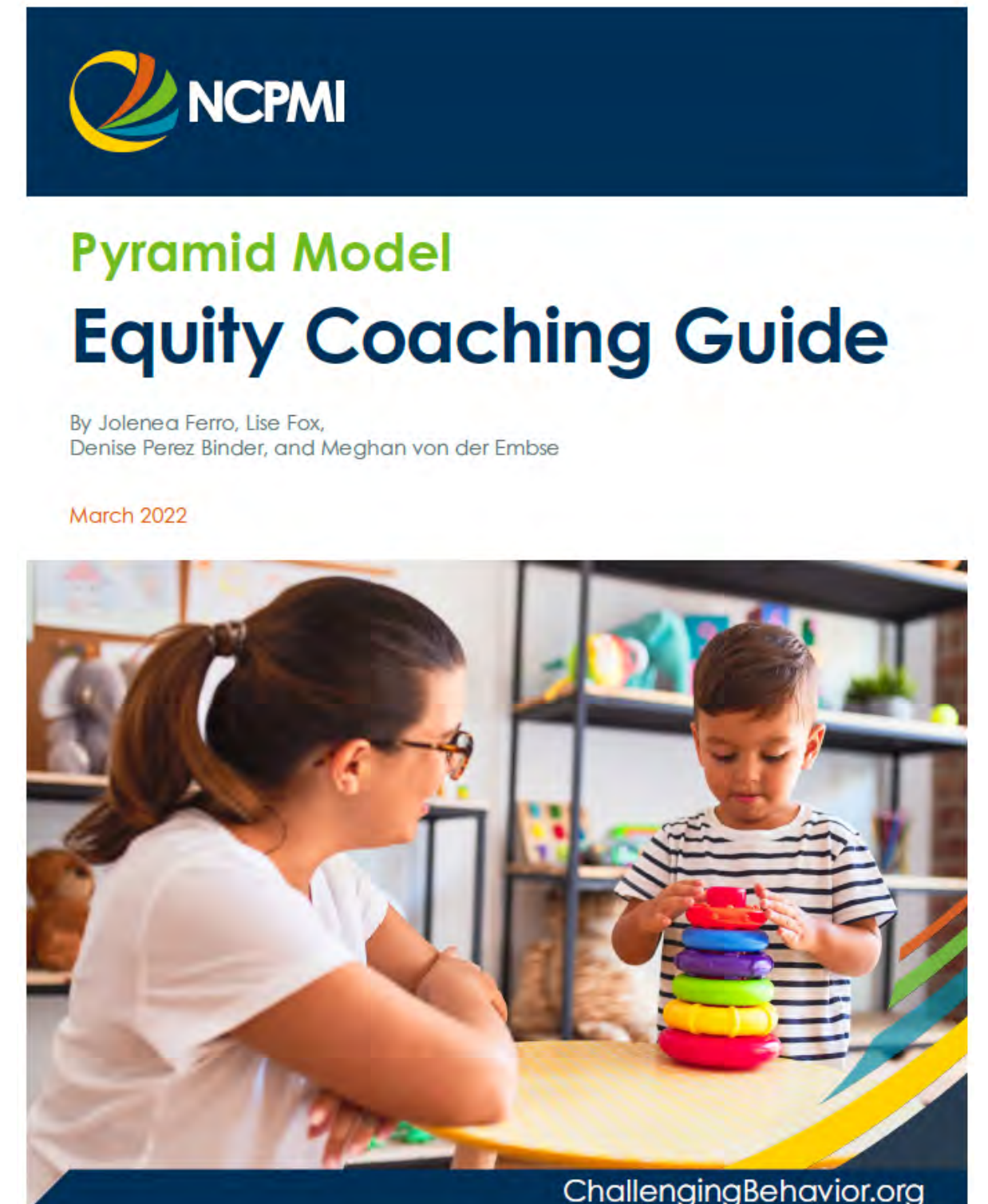
Learning Objectives:

Prerequisites:

Pyramid Model Practices,
Practice-Based Expert Coach Training

Targeted Audience:

Practitioner/ Practices Coaches
Program Implementation Coaches





PREVENT TEACH REINFORCE TIER 3 SUPPORT

PREVENT TEACH REINFORCE FOR YOUNG CHILDREN (PTR-YC) TRAINING | \$1750

This 1-day training for preschool teams to learn a manualized set of strategies for designing and implementing assessment-based interventions for children with the most significant challenging behaviors.

Up to 40 participants	Material Cost: \$42 plus shipping per person*	In-person events have additional travel costs
-----------------------	---	---

**PTR-YC manual is required. Material cost includes manual.*

Learning Objectives:

- Understanding of the connection between PTR-YC and the Pyramid Model.
- Knowledge of the content and steps of the PTR-YC process.
- Understanding functions of behavior and how important it is in developing behavior plans.
- Using data to track behaviors and inform decision-making.

Prerequisites:

Pyramid Model Practices

Targeted Audience:

Behavioral Specialist and others that write behavioral support plans.

PTR-YC TRAIN THE FACILITATOR TRAINING | \$5250

This process is intended for 2-5 people to take a deeper dive into how to facilitate teams in the PTR-YC process. This interactive series (13- hour commitment) will guide participants step-by-step through each phase of PTR-YC using a structured case study. Participants will gain practical experience and strategies for effectively facilitating each meeting in the process.

Step 1: Prior Practice Training **Step 2:** Facilitation Training **Step 3:** Case Study

Every participant will have the opportunity to observe, play a role, and debrief each meeting of the PTR-YC process. After a brief overview of the meeting content, participants will combine to form teams and work through a case study with built in time for questions and follow up.

Learning Objectives:

- Learn content for each PTR-YC meeting in the process.
- Gain skills to facilitate meetings in their settings.
- Develop a data rating scale and gain strategies for ongoing data collection and data analysis.

Prerequisites:

Pyramid Model Practices
PTR-YC Training

Targeted Audience:

Behavioral Specialist and others that write behavioral support plans.



PREVENT TEACH REINFORCE TIER 3 SUPPORT

PREVENT TEACH REINFORCE FOR FAMILIES (PTR-F) TRAINING | \$1750

In this 1-day training participants will discover how to take on the role of PTR-F facilitator to meet each family’s unique needs, and you’ll get a clear 5-step process for guiding families as they promote their child’s positive behavior. With this comprehensive, adaptable model of behavior support, you’ll strengthen family engagement, set each child on the path to healthy social-emotional development, and improve quality of life for the entire family.

Up to 40 participants

Material Cost: \$42 plus shipping per person*

In-person events have additional travel costs

**PTR-F manual is required. Material cost includes manual.*

Learning Objectives:

- Understanding of the connection between PTR-F and the Pyramid Model.
- Knowledge of the content and steps of the PTR-F process.
- Understanding functions of behavior and how important it is in developing behavior plans.
- Using data to track behaviors and inform decision-making.

Prerequisites:

Pyramid Model Practices

Targeted Audience:

Behavioral Specialist and others that write behavioral support plans.





TARGETED STRATEGIES TO SUPPORT INCLUSION FOR CHILDREN WITH DISABILITIES

TARGETED STRATEGIES TO SUPPORT INCLUSION TRAINING | \$1750

The foundation for a high-quality early childhood inclusion program is an understanding of sound early childhood practices and how to promote the engagement and skills of children diagnosed with disabilities. This training will define what inclusion really means and outlines foundational teaming and classroom practices that set the stage for all children to be engaged, included and successful.

Up to 40 participants	Material Cost: \$7 per person	In-person events have additional travel costs
-----------------------	-------------------------------	---

Learning Objectives:

- Create a strong foundation
- Understand the importance of inclusion
- Learn about universal evidence-based practices
- Understand the intensity of instruction and embedded learning opportunities

Prerequisites:

Pyramid Model Practices

Targeted Audience:

Teachers, practitioners, providers
Administration, Specialists



INCLUSION WEBINAR SERIES | \$3600

This series can be offered with 4, 5, or 6 sessions. Each session is 2-hours in length. The below topics are available for the series:

Prerequisites:

Pyramid Model Practices

Targeted Audience:

Teachers, practitioners, providers
Administration, Specialists

Creating a Foundation for High-quality Environments:

The foundation for a high-quality early childhood inclusion program is an understanding of sound early childhood practices and how to promote the engagement and skills of children diagnosed with disabilities. This session will define what inclusion really means and outlines foundational teaming and classroom practices that set the stage for all children to be engaged, included and successful.

Learning Objectives:

- Create a strong foundation
- Understand the importance of inclusion
- Learn about universal evidence-based practices
- Understand the intensity of instruction and embedded learning opportunities

General Classroom Modifications:

This session will cover classroom practices that have been shown to increase and promote the engagement of all students, a key component of high-quality inclusion. We will cover staffing patterns, the extensive use of visual supports across the day and the implementation of Individualized Group Instruction or strategies that maximize engagement and learning during Large Group/Circle times.

Learning Objectives:

- Understanding Classroom Roles & Responsibilities
- Large Group/Individualized Group Instruction
- Utilizing Enhanced Visual Supports



INCLUSION WEBINAR SERIES | CONTINUED

Routine within Routines within Routines:

Intensity of intervention has little to do with the length of a child's classroom day and everything to do with the number of meaningful learning opportunities a child is exposed to throughout their day. This session will describe in detail how we can break our day down into three components, Events, Activities and Routines and how we can use Routines to embed consistent, meaningful and fun learning opportunities across our day to promote learning across developmental domains.

Building Individualized Supports:

This session will focus on how to develop goals and how to intentionally embed these goals throughout the day. Strategies for creating meaningful goals with measurable objectives will be presented. This session will also explore intentionally embedding instructional and social opportunities throughout the daily in all daily activities. This interactive session will include group and breakout room activities.

Power of Peers:

This presentation will help teams prepare for and implement a peer social skills package to support the social skills development of all children, especially those in inclusive classroom settings. We will address four basic questions regarding peer-mediated social skills implementation: 1) What are the key skills to teach, 2) How to teach typical children intervention skills, 3) How to embed social skill opportunities across the day and, 4) What child outcomes can we expect.

Data-Based Decision Making:

This session will focus on data collection and how to use the data collected to drive instruction and make decisions. We will explore "what", "when", and "how" for collecting data including prompting hierarchies and how to use prompting to reach independence. Strategies will be presented that maximize the use of data including how to use data to monitor progress, using that data to make decisions about instruction, and utilizing data to make classroom and program decisions. This interactive session will include group and breakout room activities.

Learning Objectives:

- Define early childhood events, activities and routines.
- Plan effective routines within routines in their environment.
- Use routines to embed consistent, meaningful and fun learning opportunities across the day to promote learning across developmental domains.

Learning Objectives:

- Needs Assessments of Children (Data collection, Identifying Replacement Behaviors)
- Individualization Strategies (Mand Model, Most to Least, Least to Most, Peer Modeling)
- Embedding Schedule (What are and how to use Embedding Schedules)

Learning Objectives:

- Examine the importance of social opportunities
- Examine what social skills are important to teach
- Examine how to embed social skill opportunities
- Examine how social opportunities become peer mediated opportunities

Learning Objectives:

- Understand the different types prompts and prompting hierarchies
- Learn how to create Data Sheets to track IEP objectives and growth.
- Identify data trends, analyze those trends, and make data-based decisions.



"BIG BANG" TEACHING STRATEGIES.....

THE BIG 5 TRAINING - PRESCHOOL | \$875

This 3-hour training came from the research for Prevent Teach Reinforce for Young Children. While researchers were working with children using functional behavior analysis they realized over the study they lost 20% of their sample to these instructional practices when they were implemented with fidelity. In this training we will look at these “Big Bang” Teaching Strategies, including:

- 5 positives to 1 negative
- Schedules
- Routines to the 3rd Power
- Teaching Behavioral Expectations and Teaching Social Emotional Skills

No participant limit	Material Cost: \$7 per person	In-person option would have additional trainer and travel costs
----------------------	-------------------------------	---

Learning Objectives:

- Five evidenced-based classroom practices that benefit all children and can reduce challenging behaviors in classrooms.
- Strategies for implementing these practices to fidelity.
- Strategies for intentionally embedding the practices and learning opportunities throughout the day.

Prerequisites:

Pyramid Model Practices

Targeted Audience:

Teachers, practitioners, providers
Administration, Specialists

THE BIG 6 TRAINING - INFANT TODDLER | \$875

This 3-hour training explores the six essential practices that will strengthen infant and toddler’s social and emotional health and wellbeing. The six big practices for promoting infant/toddler social emotional health explored in this training are providing warm and responsive care, communicating and building relationships with children and families, offering predictable schedules, routines, and transitions, understanding behavior, understanding emotions and teach about feelings, and promoting engagement.

No participant limit	Material Cost: \$7 per person	In-person option would have additional trainer and travel costs
----------------------	-------------------------------	---

Learning Objectives:

- Six evidenced-based classroom practices that benefit all children and can reduce challenging behaviors in classrooms.
- Strategies for implementing these practices to fidelity.
- Strategies for intentionally embedding the practices and learning opportunities throughout the day.

Prerequisites:

Pyramid Model Practices

Targeted Audience:

Teachers, practitioners, providers
Administration, Specialists



FAMILY ENGAGEMENT PRESCHOOL

**POSITIVE SOLUTIONS FOR FAMILIES (PSF) | \$1750
TRAIN THE FACILITATOR**

This 1-day training is designed to help individuals who facilitate parent classes/skill building groups; to promote young children’s social and emotional skills, understand their problem behavior, and use positive approaches to teach children appropriate behavior.



30 participant limit	Material Cost: \$20 per person	In-person option could have additional trainer and travel costs
----------------------	--------------------------------	---

Learning Objectives:

- Review the content, materials, and strategies in each of the 7 sessions of the Positive Solutions for Families series.
- Gain a deeper knowledge of each session so that information can be shared with families in a meaningful and supportive way.
- Learn new approaches that could be used with families to promote family engagement in the social and emotional development of the children in their care.

Prerequisites:

Pyramid Model Practices

Targeted Audience:

Family Engagement Specialist, Parent group staff, Staff that would lead parent groups.

PSF COMMUNITY OF PRACTICE | \$1750

This Community of Practice will allow facilitators to connect and share experiences while leading the Positive Solution for Families sessions. It will provide space to discuss and share things like:

- Recruitment and retention ideas
- Problem-solving
- Shared successes
- Supplemental materials

COP is offered virtually

Learning Objectives:

Deepening knowledge and expertise of the selected topic by actively sharing best practices, identifying challenges, collaborating on solutions, and promoting continuous learning through peer-to-peer interaction and knowledge exchange.

Prerequisites:

Pyramid Model Practices
Positive Solutions for Families Training

Targeted Audience:

Family Engagement Specialist, Parent group staff, Staff that would lead parent groups.



FAMILY ENGAGEMENT INFANT TODDLER

PARENTS INTERACTING WITH INFANTS (PIWI) | \$1750

PIWI has been successfully used in community-based, Early Head Start and early intervention programs with a diverse range of parents and children. While the primary focus of the module will be on parent child groups, the training materials also provides guidance on the use of the model in home visiting. This 1-day training provides the professional with guidance on how to support a parent or other caregiver as they interact with the infant or toddler.



30 participant limit	Material Cost: \$20 per person	In-person option could have additional trainer and travel costs
----------------------	--------------------------------	---

Learning Objectives:

- Review the content, materials, and strategies in each of the 7 sessions of the Positive Solutions for Families series.
- Gain a deeper knowledge of each session so that information can be shared with families in a meaningful and supportive way.
- Learn new approaches that could be used with families to promote family engagement in the social and emotional development of the children in their care.

Prerequisites:

Pyramid Model Practices

Targeted Audience:

Family Engagement Specialist, Parent group staff, Staff that would lead parent groups.

PIWI COMMUNITY OF PRACTICE | \$1750

This Community of Practice will allow facilitators to connect and share experiences while utilizing Parents Interacting with Infants. It will provide space to discuss and share things like:

- Problem-solving
- Shared successes
- Supplemental materials

Learning Objectives:

Deepening knowledge and expertise of the selected topic by actively sharing best practices, identifying challenges, collaborating on solutions, and promoting continuous learning through peer-to-peer interaction and knowledge exchange.

Prerequisites:

Pyramid Model Practices
PIWI Training

Targeted Audience:

Family Engagement Specialist, Parent group staff, Staff that would lead parent groups.



LINKING EARLY LITERACY AND SOCIAL-EMOTIONAL DEVELOPMENT

CONTENT TRAINING | \$1750

This 1-day event will be focused on connecting social-emotional development with early literacy. A variety of easy and fun to use strategies will be shared for teachers to bring to their classroom. Children's books recommended to have on hand.

No participant limit

Material Cost:
\$10 per person

In-person events have additional travel costs

Learning Objectives:

- Knowledge of Social Emotional Development.
- Understanding of the link between Social Emotional Development and Early Literacy.
- Understanding of how the link can be used within the Pyramid Model framework.

Prerequisites:

Pyramid Model Practices

Targeted Audience:

Teachers, practitioners, providers



TRAIN THE TRAINER FOR PROGRAM COACHES | \$1750

Full-day or multi-part series building the knowledge capacity of Program Implementation Coaches to support programs in connecting social-emotional development with early literacy.



TRAUMA-INFORMED CARE AND THE PYRAMID MODEL

FOUNDATIONAL CONTENT TRAINING | \$875

This half-day training will provide participants with strategies, recommendations and resources for improving Trauma-Informed Care (TIC) in your program.

No participant limit	Material Cost: \$10 per person	In-person events have additional travel costs
----------------------	--------------------------------	---

Learning Objectives:

- Recognize trauma and the effects on infant and early childhood brain development; Identify how to interpret behaviors through the lens of trauma
- Learn about the principles of TIC as they relate to caregiving relationships, program space and design; including incorporation of Pyramid model strategies
- Recognize the importance of caregiver (families and staff) well-being. Gain strategies to engage with and share with families.
- Practice self-care/self-reflection techniques when working with children impacted by trauma and their families to avoid secondary trauma and burn-out.

Prerequisites:

Pyramid Model Practices

Targeted Audience:

All Early Childhood staff and team members
Mental Health staff

TRAUMA-INFORMED CARE - BEYOND THE BASICS TRAINING | \$1750

Stress and trauma can have profound impacts on young children. Nurturing, responsive, and regulated adults provide the critical buffer needed to reduce stress and support the healthy development of all children. This interactive session will build on foundational trauma-informed care practices for early childhood programs. Participants will gain insights into creating emotionally responsive environments using trauma-informed Pyramid Model practices to help children feel safe and connected.

No participant limit	Material Cost: \$10 per person	In-person events have additional travel costs
----------------------	--------------------------------	---

Learning Objectives:

- Define trauma-informed care
- Reflect on connection between trauma-informed care, wellness, and effective workforce
- Explore trauma-informed universal supports and practices
- Review trauma-informed considerations for the individual Positive Behavior Support planning process

Prerequisites:

Pyramid Model Practices
TIC Foundation Training

Targeted Audience:

All Early Childhood staff and team members
Mental Health Staff



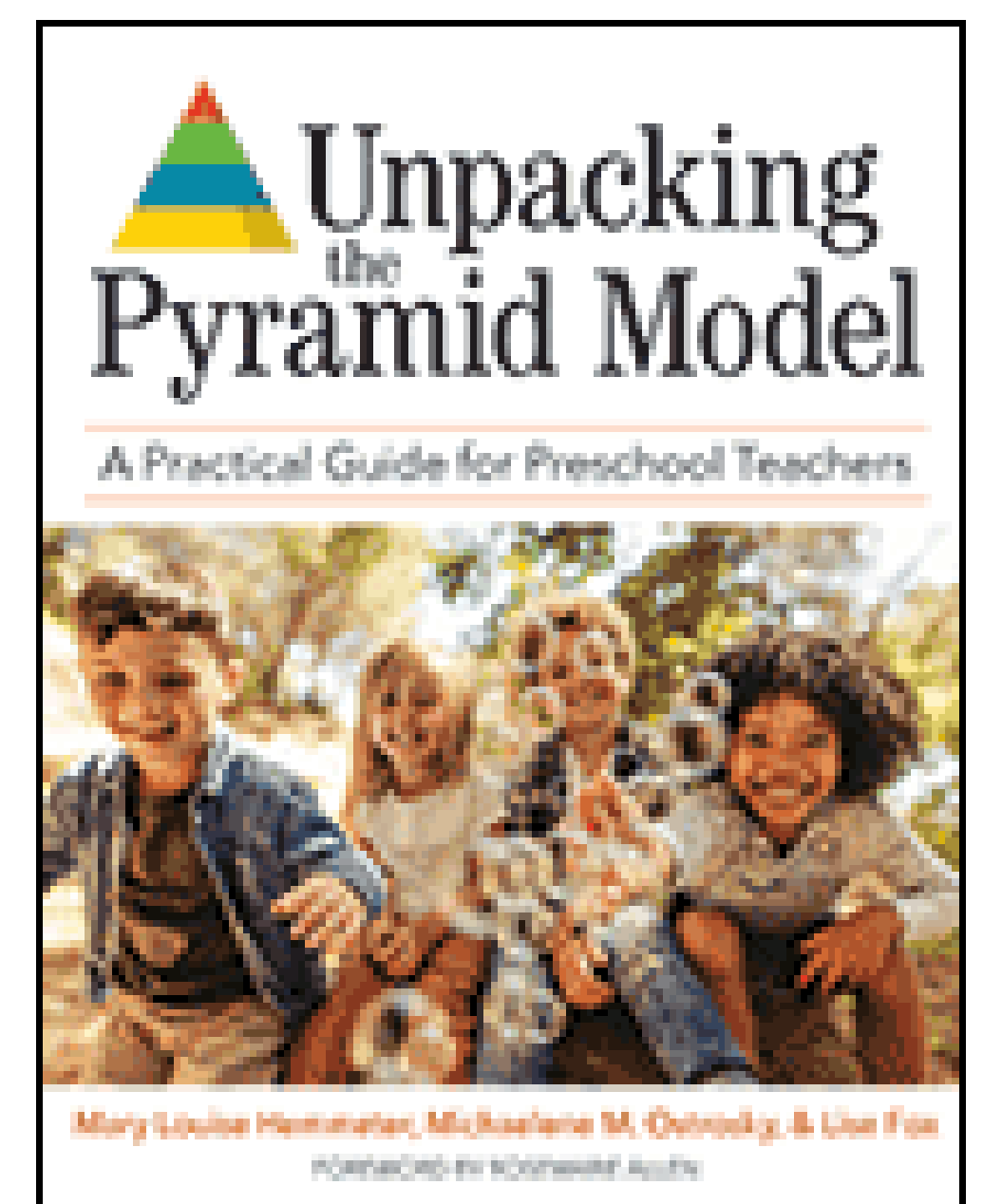
UNPACKING THE PYRAMID MODEL WEBINAR SERIES

PMC offers 2 versions of this webinar series; Preschool and Infant-Toddler. Each segment of the series is 2 hours in length and could spread out over a handful of months.

No participant limit	<i>Recommended</i> Unpacking Book Cost: \$39.96 plus shipping per person	<i>Recommended</i> Classroom Kit: \$279- \$288 plus shipping per classroom
----------------------	---	---

A PRACTICAL GUIDE FOR PRESCHOOL TEACHERS | \$2200

Based on the book, Unpacking the Pyramid - Guide for Preschool Teachers, this series will focus on crucial topics associated with effectively using Pyramid Model practices with preschool-aged children. Attention will be given to understanding the Pyramid Model framework and implementing evidence-based practices at the classroom/student level.



Webinar Segments:

- Segment 1: Supportive Classroom Environment
- Segment 2: Developing and Modeling Emotional Literacy
- Segment 3: Using and Developing Friendship Skills
- Segment 4: Problem Solving Skills for Children
- Segment 5: Understanding and Preventing Persistent Challenging Behavior

Prerequisites:

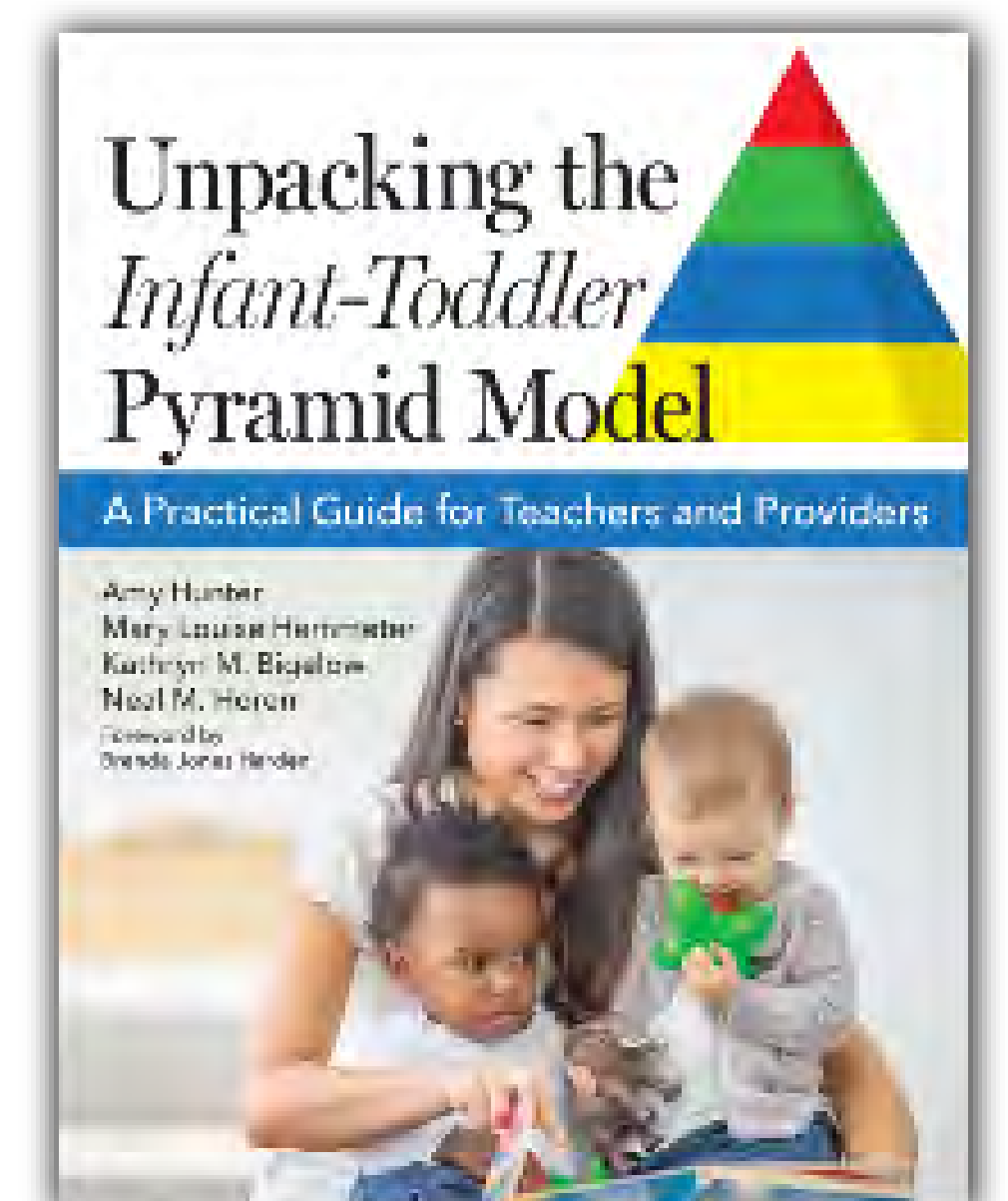
None

Targeted Audience:

All Preschool staff and team members

A PRACTICAL GUIDE FOR INFANT TODDLER PROVIDERS | \$2200

Based on the book, Unpacking the Infant-Toddler Pyramid Model - A Practical Guide for Teachers and Providers, this series will focus on crucial topics associated with effectively using Pyramid Model practices with infants and toddlers. Attention will be given to understanding the Pyramid Model framework and implementing evidence-based practices at the classroom/child level.



Webinar Segments:

- Segment 1: Building Positive Relationships with Families
- Segment 2: Creating and Maintaining Predictable Schedules
- Segment 3: Environments
- Segment 4: Teaching Social Skills
- Segment 5: Understanding, Preventing, and Effectively Responding to Challenging Behavior

Prerequisites:

None

Targeted Audience:

All Infant Toddler staff and team members



BEHAVIOR INCIDENT REPORT SYSTEM (BIRS)



The Behavior Incident Report System (BIRS) provides early care and education programs a system to collect and analyze behavior incidents in their program. This topic is offered virtually as a multi-part series.

BIRS TRAINING SERIES | \$1750

BIRS FOUNDATION - 2 hours

This training covers all foundational content regarding the who, what, where, when, and why we collect behavior incident reports in early childhood settings. The training will cover how to define a BIR and when to document a BIR. This training will also explore the various strategies which professionals may select when adopting the BIR. The importance of considering patterns regarding exclusionary discipline will also be discussed.

Learning Objectives:

- Increase their knowledge about the elements of the Behavior Incident Report System and how the Behavior Incident Report form is used.
- Describe the research related to the use of exclusionary discipline and the factors that prevent its use.
- Identify considerations for BIRS program readiness.

Targeted Audience:

Program Implementation Coaches
 Program Leadership Team Members
 Data Coordinator
 Teachers/ Practitioners

Prerequisites:

Pyramid Model Practices

BIRS 1: DATA COLLECTION - 3 hours

This training will guide participants in the process of collecting behavior incident report data. It will describe the data collection tools, processes, and methods that programs can use to collect BIR data. Participants will also gain an in-depth understanding of the BIR data collection tool in Pyramid Model Implementation Data System (PIDS) and how to successfully set up their programs and classrooms for BIR data collection. This training will provide a brief introduction to the reports which can be generated in PIDS for BIR analysis.

Learning Objectives:

- Identify the steps to set up PIDS for BIRS data entry.
- Demonstrate how to enter BIRs in PIDS.
- Understand how to find and use the BIR reports in PIDS.

Targeted Audience:

Program Implementation Coaches
 Program Leadership Team Members
 Behavior Support Specialist
 Data Coordinator
 Teachers/ Practitioners

Prerequisites:

Pyramid Model Practices
 BIRS Foundation Training

Recommended: Complete at least 3 months of data collection before advancing to BIRS 2



BEHAVIOR INCIDENT REPORT SYSTEM (BIRS)



BIRS TRAINING SERIES

CONTINUED

BIRS 2: DATA ANALYSIS - 3 hours

This training will take a deep dive into BIR analysis. Participants will practice using the “*Look, Think, Act*” framework while exploring the various reports in PIDS. Participants will learn how to conduct child, classroom, and program analyses with a trauma informed lens. This training takes a supportive and strength-based approach to BIR data analysis to deeply understand how programs can support teachers and children in addressing and understanding challenging behavior.

Learning Objectives:

- List the big questions Leadership Teams will review monthly.
- Identify the steps to make data-based decisions at the program, classroom, and individual child level.
- Understand the purpose of the precision statement and know how to create one.

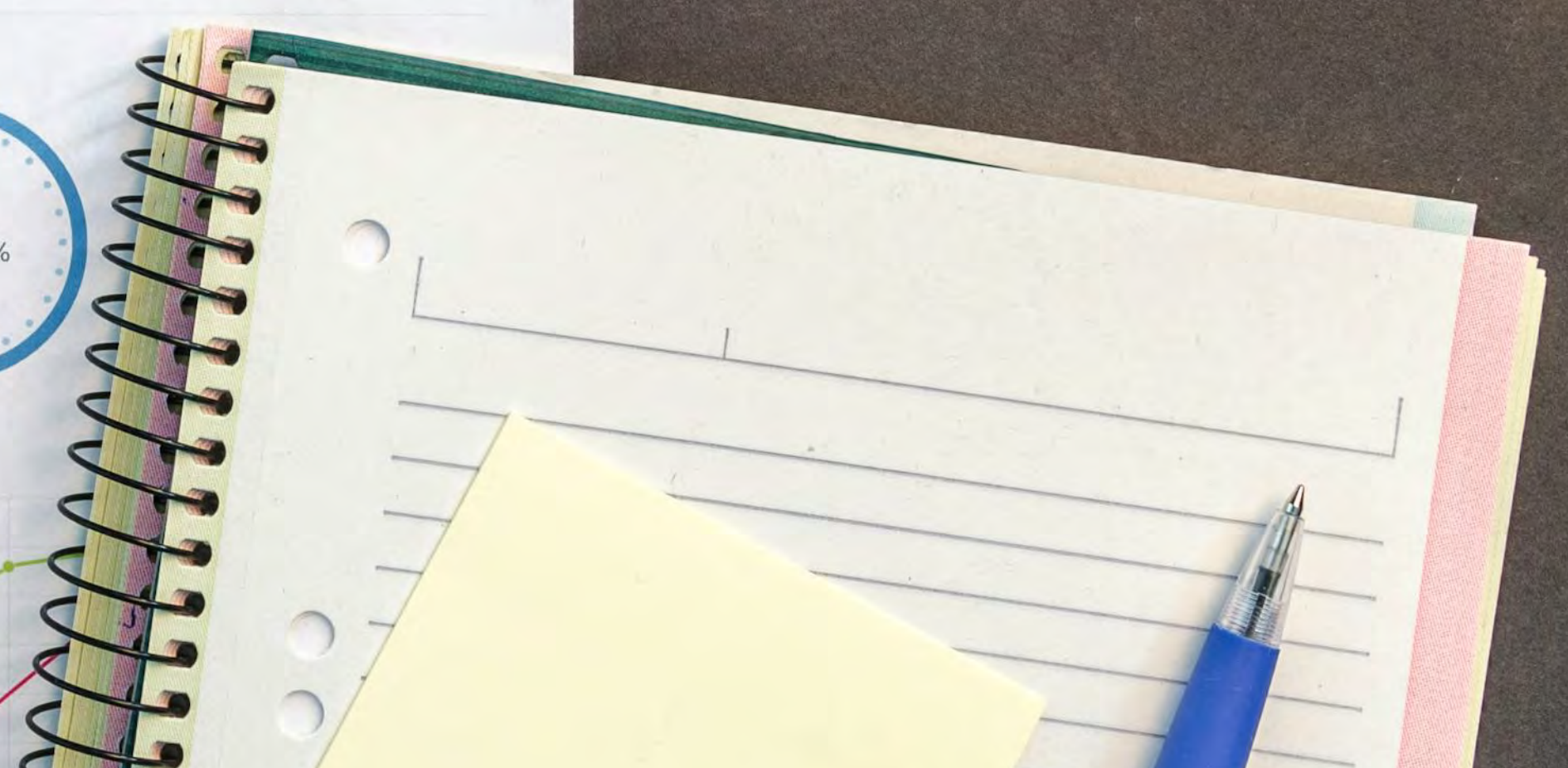
Targeted Audience:

Program Implementation Coaches
Program Leadership Team Members
Behavior Support Specialist
Data Coordinator

Prerequisites:

Pyramid Model Practices
BIRS Foundation Training
BIRS 1: Data Collection

Required:
Complete at least 3 months of data collection





TECHNICAL ASSISTANCE GROUP SUPPORT

COMMUNITY OF PRACTICE | \$1750 \$218.75 per hour

A Community of Practice (CoP) is a group of people who share a common interest in a topic and come together to fulfill both individual and group goals. It provides an opportunity for participants to meet on a regular basis for ongoing professional development, share celebrations and struggles, and get input and insight from others. CoP's can be scheduled to support most topics provided by PMC.

Includes 8, 1-hour sessions. More or less sessions can be requested.

Participant Limit:
20 people

Learning Objective:

Deepening knowledge and expertise of the selected topic by actively sharing best practices, identifying challenges, collaborating on solutions, and promoting continuous learning through peer-to-peer interaction and knowledge exchange.

Prerequisites:

Participation in the main professional development topic selected for COP

Targeted Audience:

Same participants from the main professional development topic

PROFESSIONAL LEARNING COMMUNITY | \$875 \$218.75 per hour

A Professional Learning Community (PLC) is scheduled with a group of participants to focus on specific topics and covered over a limited number of meetings. While can be similar to a Community of Practice a PLC is typically connected directly with content or application of a practice.

PLC's can be scheduled to support most topics provided by PMC.

Includes 4, 1-hour sessions. More or less sessions can be requested.

Participant Limit:
20 people

Learning Objective:

The PLC is focused on improving participants learning outcomes through collective inquiry, collaboration, and continuous improvement.

Prerequisites:

Participation in the main professional development topic selected for PLC

Targeted Audience:

Same participants from the main professional development topic





PROFESSIONAL DEVELOPMENT OPTIONS PER PERSON

In addition to the larger professional development events outline previously in this menu PMC provides the option for individuals to join existing PD events. The chart below provides a per person cost for each event.

PD Event - Topic	Per Person Cost	Material Cost Per Person
Preschool Foundation Infant Toddler Foundation Birth to 5 Foundation	\$450	Handouts - \$20
Preschool Train the Trainer Infant Toddler Train the Trainer	\$450	Binder - \$30
Early Intervention Foundation	TBD	
Family Child Care Foundation	TBD	
Teaching Pyramid Observation Tool (TPOT)	\$300	Manual/Handouts - \$85
The Pyramid Infant Toddler Observation Scale (TPITOS)	\$300	Manual/Handouts - \$85
Practice-Based Coaching	\$300	Handouts - \$12
Prevent Teach Reinforce for Young Children	\$150	Manual/Handouts - \$42
Prevent Teach Reinforce for Families	\$150	Manual/Handouts - \$42
Targeted Strategies to Support Successful Inclusion: Webinar Series	\$150	Handouts - \$7
Big 5 or Big 6	\$75	Handouts - \$7
Positive Solutions for Families	\$150	Handouts - \$20
Parents Interacting with Infants (PIWI)	\$150	Handouts - \$20
Linking Literacy and SE	TBD	
Unpacking Webinar Series: Preschool or Infant toddler	Full series: \$150 Each session: \$30	<i>Optional:</i> Book - \$39.96 + shipping Classroom Kit - \$288 + S&H
BIRS Foundations	\$75	



ePYRAMID COURSES & COHORTS

The Pyramid Model Consortium (PMC) ePyramid suite is an online professional development program created by experts in the field. It provides complete, on-demand access to Pyramid Model training.

Each ePyramid course consists from 2 to 29 hours of content, divided into shorter modules and lessons. A subscription for a course provides the user with up to a year of online access, depending on the course selected.

All courses are designed for each person to have their own account and access to the content.

This section will cover the courses offered and additional supports such as Learning Communities that provide a deeper dive into the content.





ePYRAMID FOUNDATIONAL COURSES

PRESCHOOL MODULES | \$69

ENGLISH & SPANISH AVAILABLE

This course is 29 contact hours in total for all 7 modules.

Each module can also be purchased separately.

Introduction to Pyramid Model | 2 hours

This module introduces the Pyramid Model framework to participants. Topics include: the relationship of the Pyramid Model to prevention science, equity, inclusion, trauma-informed care, anti-bias practice and the use of data for decision-making, understanding child behavior, and the research that provides an evidence-base for the use of the Pyramid Model.

Module 1: Nurturing and Responsive Relationships | 6 hours

Establishing nurturing and responsive relationships within a caring community is the foundation of the Pyramid Model. This training focuses on practices for building relationships with children, promoting relationships between children, relationships with families that affirm family culture and identity, and relationships with team members.

Module 2: High-Quality, Supportive Environments | 6 hours

This module focuses on the practices for establishing high-quality supportive classroom environments that promote social-emotional skill development and prevent challenging behavior. Practices related to schedules, routines, transitions, promoting engagement, expectations, and rules are addressed in this module.

Module 3: Teaching Social-Emotional Skills | 6 hours

Promoting social-emotional development is core to the Pyramid Model. This module provides training on the practices for teaching friendship skills, emotional literacy, self-regulation, and problem-solving.

Module 4: Individualized Teaching of Social-Emotional Skills | 4 hours

This module guide practitioners in how to individualize instruction on social-emotional skills for children who need more targeted supports. Practices that are taught include: teaching systematically, peer-mediated intervention, planning for embedded instruction, and progress monitoring.

Module 5: Addressing Challenging Behavior | 6 hours

This module provides the practices for understanding child challenging behavior, how to respond to challenging behavior, becoming aware of bias in responding, de-escalating behavior, and the components of developing a behavior support plan for children with persistent challenging behavior.

Module 6: Overview of Prevent-Teach-Reinforce for Young Children | 1 hour

In this module, practitioners learn about the steps of Prevent-Teach-Reinforce for Young Children (PTR-YC) and how PTR-YC is used as a manualized process for conducting a functional behavioral assessment and developing a behavior support plan.

Learning Objectives:

- Create Nurturing and Responsive Relationships
- Provide High-Quality Supportive Environments
- Implement Targeted Social-Emotional Supports
- Practice Intensive Interventions

Prerequisites:

None

Targeted Audience:

Individuals who support children ages 2 through 5 years



INFANT TODDLER | \$69

ENGLISH & SPANISH AVAILABLE

This course is 21 contact hours in total for all 7 modules.

Each module can also be purchased separately.

Introduction to Pyramid Model | 2 hours

This module introduces the Pyramid Model framework to participants.

Module 1: Introduction and Understanding Social-Emotional Development | 2 hours

This module will acquaint participants with the Pyramid Model, introduce important terms that will be used throughout the Pyramid Model training modules, and lay a foundation to better understand the role caregivers play in young children’s social-emotional development.

Module 2: Focusing on Relationships | 3 hours

Participants will explore the importance and complexities of developing relationships between caregivers, families, and children. Participants should leave understanding that social-emotional development takes place within the context of relationships, so strategies to support development must prioritize building relationships.

Module 3: Responsive Routines, Schedules, and Environments | 3 hours

Participants will learn how being intentional about establishing daily routines and setting up the environment can: help young children feel confident and secure, paving the way for social-emotional growth; promote children’s active and safe exploration and learning; and facilitate positive child-peer and adult-child interactions.

Module 4: Understanding Behavior | 2 hours

Participants will learn how to use observation to better understand child behavior. We will look at the many influences affecting behavior and use this knowledge to examine our own beliefs. We will practice reframing our thoughts to better respond to challenging situations.

Module 5: Teaching About Feelings | 2 hours

Participants will explore what the development of emotional literacy looks like (i.e., labeling feelings in self and others, recognizing facial and physiological signs, modulating responses, developing coping strategies) and share a variety of strategies teachers can use to support and teach the young early learners in our care about feelings.

Module 6: Promoting Positive Peer Interactions | 2 hours

Participants will gain knowledge on how to facilitate positive peer interactions and support the development of social and friendship skills, learn about the developmental stages of social and play skills, and apply that knowledge to classroom practices.

Module 7: Individualized Teaching | 2 hours

Participants will learn how to identify and address delays in social-emotional development. The module provides an overview of the screening and assessment process and guidance on how to develop a systematic plan to provide individualized teaching to children who have delays.

Module 8: Challenging Behavior | 3 hours

Participants will: identify and define challenging behavior, and work to understand why challenging behavior happens; discuss how to gather data and implement strategies that will prevent challenging behavior; and discuss strategies to address or respond effectively to challenging behavior when it is present.

Learning Objectives:

- Create Nurturing and Responsive Relationships
- Provide High-Quality Supportive Environments
- Implement Targeted Social-Emotional Supports
- Practice Intensive Interventions

Prerequisites:

None

Targeted Audience:

Individuals who support children ages 0 through 3 years



BIRTH TO 5 | \$49

ENGLISH & SPANISH AVAILABLE

This course is 18 contact hours

This course contains the original ePyramid content.

Module 1: Building Relationships and Creating Supportive Environments

Content Includes:

- Understanding the relationship between challenging behavior and social-emotional development
- What is social emotional development?
- Considering the foundation nature of early relationship experiences.
- Forming and maintaining relationships with your young children, families and co-workers.
- Identifying responsive care giving strategies adults can use to support infants and toddlers.
- Examining our attitudes about challenging behaviors
- Designing the physical environment
- Schedules, routines, and transitions
- Planning activities that promote engagement
- Giving directions and teaching classroom rules
- Ongoing monitoring and positive attention

Module 2: Social-Emotional Teaching Strategies

Content Includes:

- Identifying the importance of teaching social-emotional skills
- Identifying ways a high-quality supportive environment can promote social emotional development in infants and toddlers.
- Targeted strategies to enhance social-emotional well-being of infants and toddlers.
- Understanding the positive impact of responsive caregiving routines
- Developing friendship skills
- Enhancing emotional literacy
- Controlling anger and impulse
- Developing problem-solving skills
- Individualizing instruction
- Partnering with families

Module 3: Individualized Intervention: Determining the Meaning of Behavior and Developing Appropriate Responses

Content Includes:

- Overview of Positive Behavior Supports
- Reviewing the dimensions of communication: Form and function
- Considering behavior, including challenging behavior as communication
- Providing an introduction to Functional Assessment
- Understanding the development of behavior support planning

Learning Objectives:

- Create Nurturing and Responsive Relationships
- Provide High-Quality Supportive Environments
- Implement Targeted Social Emotional Supports
- Practice Intensive Interventions

Prerequisites: None

Targeted Audience:

Individuals who support children ages 0 through 5 years





ePYRAMID **SECTOR SPECIFIC COURSES**

PYRAMID MODEL FOR FAMILY CHILD CARE | \$49 **ENGLISH & SPANISH AVAILABLE**

This course is 16 contact hours in total.

This course introduces the Pyramid Model as a framework for promoting social-emotional development and addressing challenging behaviors in family child care (FCC) settings. It guides FCC providers through understanding and implementing the Pyramid Model practices within the unique context of FCC. The course will help you identify and apply Pyramid Model strategies intentionally across mixed-age groups, including infants, toddlers, and preschoolers, while addressing the distinctive features of FCC homes, such as flexible schedules, nurturing environments, and close family relationships.

Designed for anyone working in or supporting FCC, the course emphasizes building strong, responsive relationships, creating high-quality environments, and teaching social-emotional skills to children of all ages. It also delves into trauma-informed and culturally responsive practices, addresses provider well-being, and leverages family-centered approaches. Practical tools and resources, including several video examples, align with best practices and support the use of high-quality Pyramid Model strategies.

This course has been broken down into 12 shorter modules:

- Module 1: Overview of the Pyramid Model in Family Child Care
- Module 2: Social and Emotional Development for Family Child Care Providers
- Module 3: Family Engagement and Family-Centered Practices
- Module 4: Cultural Responsiveness and Family Child Care
- Module 5: Nurturing and Responsive Relationships
- Module 6: Creating a High-Quality, Supportive Environment for All Ages
- Module 7: Social-Emotional Teaching
- Module 8: Social-Emotional Teaching – Friendship Skills and Emotional Literacy
- Module 9: Social-Emotional Teaching – Self-Regulation and Problem-Solving Skills
- Module 10: Addressing Challenging Behaviors
- Module 11: Collecting and Using Data in Family Child Care Homes
- Module 12: Time Management, Organization, Wellness, and Teaming

Learning Objectives:

- Create Nurturing and Responsive Relationships
- Provide High Quality Supportive Environments
- Implement Targeted Social Emotional Supports
- Practice Intensive Interventions

Prerequisites:

None

Targeted Audience:

Individuals who support children ages 0 through 5 years





PYRAMID MODEL PRACTICES IN EARLY INTERVENTION | \$49

This course is 8 contact hours

These modules will guide the user through the Early Intervention Pyramid Model Practices Training. They will help you identify and understand the Pyramid Model practices within the context of early intervention/Part C. The knowledge you acquire from these modules will help you build an awareness of what the Pyramid Model practices in early intervention are, and how to use them with more intention throughout your work with families. The modules are for anyone who is working with and coaching families with infants and toddlers. The practices identified in this training are aligned with the Early Interventionist Pyramid Practices Fidelity Instrument, also known as the EIPPF, which is a tool that can be used by early interventionist and coaches when building staff capacity in using high-quality Pyramid Model practices.

Module 1

- Overview of Pyramid Model
- Building Relationships with Families
- Understanding Culturally Responsive Practices
- Effective Communication with Families

Module 2

- Social Emotional Competence in Infants and Toddlers
- Responsive Caregiving and the Dyadic Relationships
- Foundations of Family Coaching

Module 3

- Family-Centered Coaching Practices
- Positive Parenting Practices
- Social Emotional Assessment

Learning Objectives:

- Describe the "Five Primary Principles".
- Describe the 6 Key Practice areas from the EIPPF.
- Identify and practice skills and strategies for engaging in collaborative conversations with families.
- Identify effective strategies to support positive dyadic interactions.
- Define family-centered coaching.

Prerequisites:

None

Targeted Audience:

Individuals who support children ages 0 through 3 years





ePYRAMIDTIER 3 COURSES

PREVENT TEACH REINFORCE FOR YOUNG CHILDREN | \$49

This course is 8 contact hours in total.

Prevent-Teach-Reinforce for Young Children (PTR-YC) is a research-proven, family-centered approach used in preschool settings nationwide to resolve persistent challenging behaviors. This course, along with the PTR-YC manual, introduces the five steps of the PTR-YC model:

- 1) Teaming and goal setting
- 2) Data collection
- 3) Functional behavioral assessment
- 4) Development and implementation of a behavior intervention plan
- 5) Using data, arranging for generalization, and next steps.

During this course you'll get instructions for conducting all five steps, case examples from real-world experience, and the tools and assessment instruments you need to implement the steps effectively.

- Module 1: Introduction to Prevent Teach Reinforce
- Module 2: Classroom Readiness
- Module 3: Teaming and Goal Setting
- Module 4: Data Collection
- Module 5: PTR-YC Assessment
- Module 6: PTR-YC Intervention
- Module 7: Using Data & Next Steps

The [PTR-YC manual](#) is recommended to have while taking this course.

Learning Objectives:

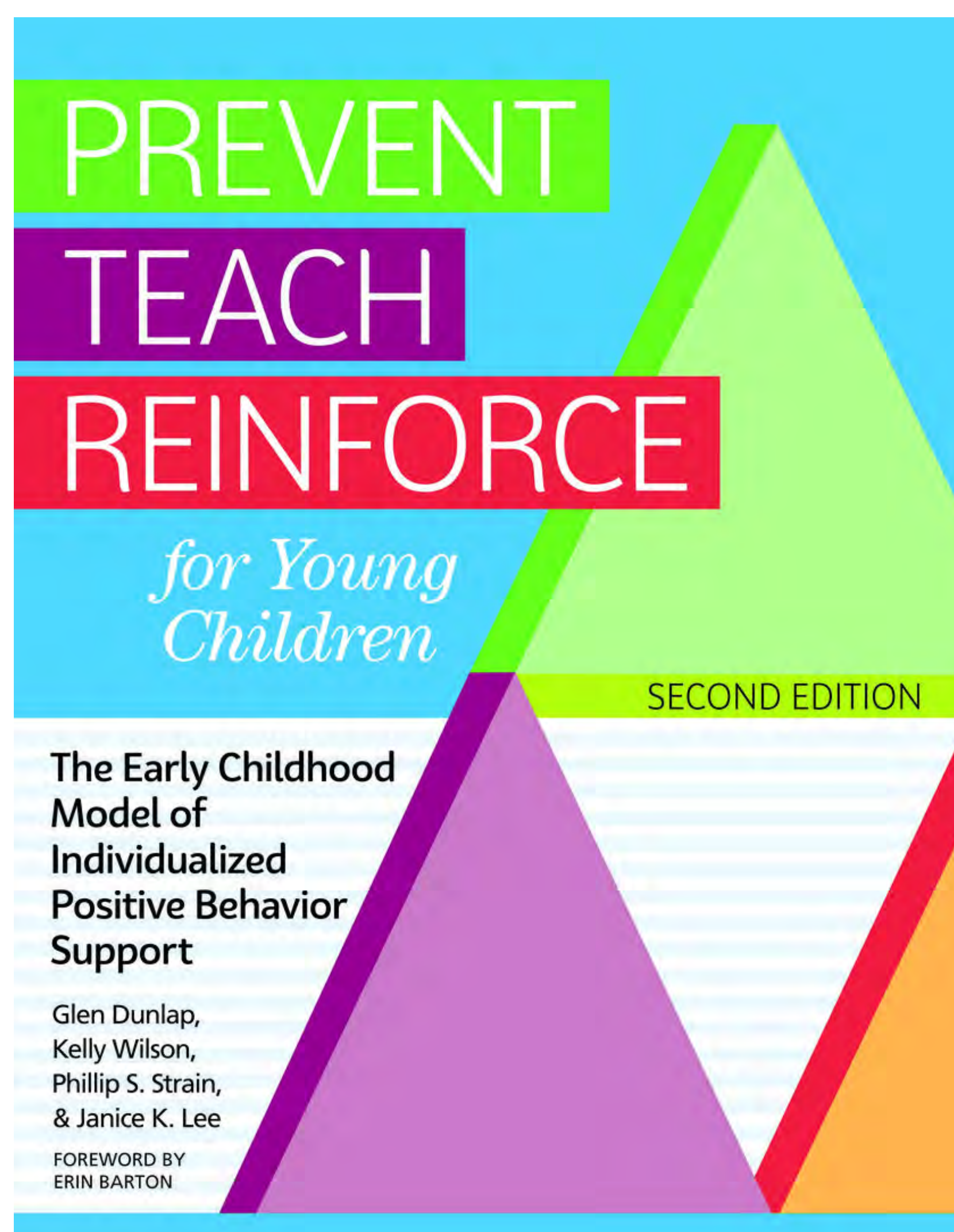
- Describe the principles and history of PTR-YC.
- Integrate strategies that engage families at every step of the PTR-YC process.
- Understand the importance of the goal setting step of the PTR-YC process and explore planning.
- Describe the importance of data collection and analyze data for decision-making.

Prerequisites:

Preschool Practices Training

Targeted Audience:

Behavioral Specialist and others that write support plans
Preschool staff





PREVENT TEACH REINFORCE FOR FAMILIES | \$49

This course is 8 contact hours in total.

This ePyramid course will explore the Prevent Teach Reinforce progress for families. In this course, paired with the PTR-F manual, you'll discover how to take on the role of PTR-F facilitator to meet each family's unique needs, and you'll get a clear 5-step process for guiding families as they promote their child's positive behavior. With this comprehensive, adaptable model of behavior support, you'll strengthen family engagement, set each child on the path to healthy social-emotional development, and improve quality of life for the entire family.

Help Families with the 5-step PTR-F process:

- Initiating the process. Establish a partnership with the family, and then work together to set individualized goals and develop a vision for the child's future.
- Assessment. Guide the family through the steps of functional behavioral assessment (FBA) to uncover the triggers and functions behind the child's behavior.
- Intervention. Using results of the FBA, help the family choose from a menu of intervention options to build a behavior support plan that meets their specific needs.
- Coaching. Conduct meetings with the family, acting as cheerleader and coach and guiding the family to implement the behavior support plan with fidelity in home and community settings.
- Monitoring. Review behavioral data with the family to monitor how well the plan is being implemented and whether the child is making progress.

The PTR-F manual is recommended to have while taking this course.

Learning Objectives:

- Explain the four guiding principles of PTR-F.
- Identify factors that promote the effectiveness of PTR-F.
- Understand the importance of coaching and support tailored to needs of the family.
- Describe strategies to design an individualized intervention for challenging behavior within the family context.
- Learn how to utilize ongoing data to make decisions.

Prerequisites:

Practices Training

Targeted Audience:

Behavioral Specialist and others that write support plans

- Module 1: Introduction to Prevent-Teach-Reinforce for Families
- Module 2: Working with Families and Universal Practices
- Module 3: Initiating the PTR-F Process
- Module 4: PTR-F Assessment
- Module 5: PTR-F Intervention
- Module 6: Coaching the Family to Implement Plans with Fidelity
- Module 7: Using Data & Next Steps



A MODEL OF INDIVIDUALIZED
POSITIVE BEHAVIOR SUPPORT
FOR HOME AND COMMUNITY

Glen Dunlap, Phillip S. Strain,
Janice K. Lee, Jaclyn D. Joseph,
Christopher Vatland, & Lise Fox
Foreword by Ann Turnbull





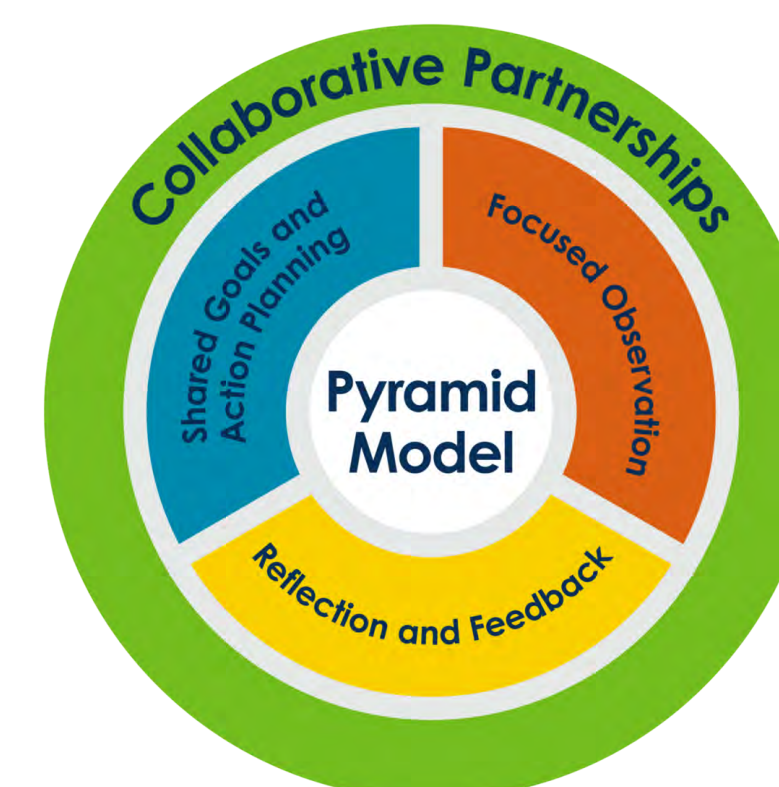
ePYRAMID ADDITIONAL COURSES

PRACTICE-BASED COACHING | \$49

This course is 8 contact hours in total.

Practice-Based Coaching (PBC) is a research-based coaching framework for supporting early childhood practitioners' use of evidence-informed teaching practices. In these modules we will explore why coaching has become a popular professional development support, what exactly Practice-Based Coaching is, and how PBC can be delivered to support implementation of effective practices.

- Module 1: Introduction to Practice-Based Coaching
- Module 2: Collaborative Coaching Partnership
- Module 3: Shared Goals and Action Planning
- Module 4: Focused Observation
- Module 5: Reflection and Feedback
- Module 6: Putting it All Together



Learning Objectives:

- Introduce the PBC model
- Describe characteristics of collaborative partnerships
- Identify practices that are the focus of PBC
- Identify key features of and practice goal setting and action planning, focused observations, and supporting reflection and providing feedback

Prerequisites:

Pyramid Model Practices

Targeted Audience:

Practitioner Coaches
Program Implementation Coaches





TARGETED STRATEGIES TO SUPPORT INCLUSION OF CHILDREN WITH DISABILITIES | \$49

ENGLISH & SPANISH AVAILABLE

This course is 10 contact hours in total.

The foundation for a high-quality early childhood inclusion program is an understanding of sound early childhood practices and how to promote the engagement and skills of children diagnosed with disabilities. This ePyramid course will define what inclusion really means and outline foundational teaming and classroom practices that set the stage for all children to be engaged, included and successful. Modules will also explore the following topics:

- Creating a Foundation for Inclusion
- General Classroom Strategies to Support Inclusion
- Maximizing the Number of Learning Opportunities – Routines Within Routines
- The Power of Peers: Peer-Mediated Instruction
- Data and Data-Based Decision Making
- Evidence-based Interventions: Individualized Supports

Learning Objectives:

- Learn specific universal classroom practices that support inclusion.
- Expand the use of visual supports in the environment to support inclusive practices.
- Gain an understanding of routines and the key elements for establishing effective routines.
- Create a system for recording and charting daily data

Prerequisites:

Pyramid Model Practices

Targeted Audience:

Preschool Classroom Teachers and Practitioners

PRACTICES TO REDUCE SUSPENSION AND EXPULSION | \$29

ENGLISH & SPANISH AVAILABLE

This course is 2 contact hours in total.

This module will focus on the importance of culturally responsive practices in enhancing outcomes for all children, especially those from diverse backgrounds. The role of implicit bias will be discussed. Participants will be offered a variety of activities for implementing the 7 principles of culturally responsive practices that help us recognize and identify implicit bias. Additionally, participants will be offered ideas for how to use the values of the family and community to inform teaching and learning through the lens of the Pyramid Model.

Learning Objectives:

- Understand how implicit biases influence disproportionate discipline practices.
- Identify how culturally responsive practices are a component of social-emotional development.
- Identifying ways in which disproportionality influences diverse groups of children.
- Defining the seven principles of culturally responsive practices.

Prerequisites:

None

Targeted Audience:

All Early Childhood staff



TRAUMA-INFORMED CARE & THE PYRAMID MODEL | \$39

ENGLISH & SPANISH AVAILABLE

This course is 5 contact hours in total.

The Trauma-Informed Care & the Pyramid Model modules are designed to ensure that teachers understand the impact of trauma on young children and their families. Adding a Trauma-Informed Care lens to your existing Pyramid practices will help to implement practices that promote children’s social emotional development, healing and resilience.

Module 1

- What is Trauma and Toxic Stress?
- How the Stress Response System Affects Development
- Shifting to a Trauma-Informed Approach

Module 2

- Principles of Trauma-Informed Care
- Applying a Trauma Informed Care Lens
- Protective Factors to Support Resilience

Module 3

- Create a Safe Learning Environment Using Positive Directions and Rules
- Predictable Routines and Transitions
- Help Children Regulate Their Emotions and Express Feelings
- Intensive Interventions that Consider the Childs Experiences

Learning Objectives:

- Understand the impact of trauma on young children and their families and to recognize the signs and symptoms of trauma in young children.
- Understand the assumptions and principles of trauma-informed care.
- Builds a foundation to support children’s resilience and recovery.
- Supports implementation of specific practices to implement Trauma-Informed Care Pyramid Model practices.

Prerequisites:

Pyramid Model Practices

Targeted Audience:

All Early Childhood staff
Mental Health Staff/Consultants

WELLNESS: TAKING CARE OF YOURSELF | \$29

ENGLISH & SPANISH AVAILABLE

This course is 2 contact hours in total.

This course is designed to help teachers understand the link between their own well-being and children’s behavior. Use these lessons to take steps towards improving staff wellness in your program leading to higher quality care for children.

Learning Objectives:

- Identify symptoms of stress, compassion fatigue, secondary trauma and vicarious trauma.
- Learn strategies for reducing stress and increasing wellness.
- Understand how mindfulness can reduce stress and improve well-being

Prerequisites:

None

Targeted Audience:

All Early Childhood staff
Mental Health Staff/Consultants



ePYRAMID IMPLEMENTATION COURSES

IMPLEMENTATION EXPLORATION AND READINESS | FREE

This course is 3 contact hours in total.

Interested in exploring Pyramid Model Implementation? The purpose of this course is to help you gain an understanding of the Pyramid Model program-wide implementation process, and to give you the information you need to determine if this is the right time for you to commit to implementing this framework.

This course also demonstrates how providing this evidence-based, systematic implementation of the Pyramid Model benefits both your staff and the children and families you serve.

These modules can be completed on your own or together with your leadership team.

Learning Objectives:

- Review some of the concerns that may have led you to consider implementing the Pyramid Model in your program.
- Explore the Pyramid Model and how it has helped other programs address these concerns.
- Become familiar with the Benchmarks of Quality. This is the data source and guide of the Program-wide journey.

Prerequisites:

Pyramid Model Practices

Targeted Audience:

Administrators/Directors
Leadership Teams

PROGRAM-WIDE PYRAMID MODEL IMPLEMENTATION | FREE

This course is 14 contact hours in total.

This course is designed to support your Pyramid Model Leadership Team in implementing the Pyramid Model Program-wide. This course will guide your leadership team through the 7 Critical Elements of the Early Childhood Program-Wide PBS Benchmarks of Quality (BoQ). The Critical Elements that are included in this course are Establishing a Leadership Team, Staff Buy In, Family Engagement, Program Wide Expectations, Professional Development and Staff Support Plan, Procedures for Responding to Challenging Behavior and Monitoring Implementation and Outcomes. By the end of this ePyramid course you will have completed the Early Childhood Benchmarks of Quality and built an Implementation Plan.

Learning Objectives:

- Complete all sections of the BoQ.
- Learn more about what that Critical Element entails.
- Create a plan to implement Pyramid Model for your program.

Prerequisites:

Pyramid Model Practices
Exploration & Readiness Course

Targeted Audience:

New Leadership Team Members
Leadership Teams

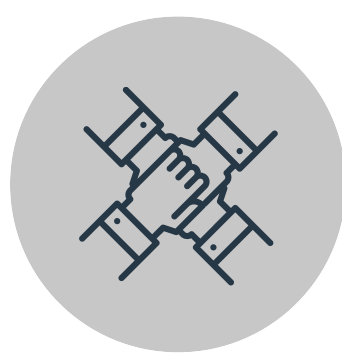


ePYRAMID LEARNING COMMUNITIES

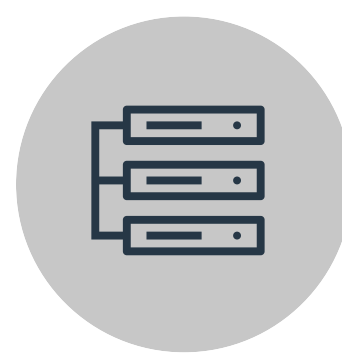
VIRTUAL COHORTS



ePyramid Learning Communities (PLC) are designed to add a human touch-point and help participants implement Pyramid Model practices through online learning. PMC Facilitators lead participants through reflections and action planning that are guided by the ePyramid course content. More specifically, the sessions are designed to help participants discuss the lessons, provide reflection and ask questions while implementing the practices.



PLC's are scheduled as requested by programs, communities, or states/provinces. This allows our team to match the right facilitator for the requested content and meet the schedule needs of the participants. A PLC is best facilitated with a group of 7 to 20 participants. Smaller teams and individuals are also encouraged to participate in PLC offerings but might be paired with another program to ensure a group experience is provided for the participants.



In the chart below we highlight the courses and PLC's that PMC currently offers. The cost reflects only the facilitated sessions. There is an additional cost of a ePyramid course per participant.

Course Title	Number of Session	Cost per PLC (7 to 20 participants)
Preschool Modules	3, 7, or 9 session options available	\$1970.00
Infant Toddler Modules	3, 6, or 9 session options available	\$1970.00
Birth to 5 Modules	3, 6, or 9 session options available	\$1970.00
Family Child Care Modules	9 sessions	\$1970.00
Early Intervention Modules	3 or 6 sessions available	\$1320.00
Trauma-Informed Care and the Pyramid Model	3 sessions	\$660.00
Targeted Strategies for Inclusion	7 sessions	\$1540.00
Culturally Responsive Practices	1 or 2 sessions available	\$440.00



If you are looking to participate in a Learning Community as an individual, we also offer cost per person ranging from \$199 to \$329 depending on the PLC you are interested in joining.



ePYRAMID COURSES FOR LMS/REGISTRY SYSTEMS

PMC wants users to get the most out of the ePyramid courses. For some agencies/states/countries this means needing online courses to live on a registry system or professional development learning management system (LMS).

To better support states and countries in implementation of Pyramid Model the costs of adding courses to an outside system is based on population. The chart below shows the 4 tiers we offer and a general cost range of courses. Tier 1 will reflect costs for smaller populations while Tier 4 will be for larger populated areas.

Courses can be purchased with a 1, 3, or 5 year agreement.

For more detail you can contact Erin Kalanick - erin.kalanick@pyramidmodel.org

Population Tier	Cost Range Per Course
Tier 1	\$4,500 - \$9,350
Tier 2	\$5,500 - \$11,000
Tier 3	\$6,500 - \$13,200
Tier 4	\$7,500 - \$16,500





PYRAMID MODEL IMPLEMENTATION DATA SYSTEM (PIDS)

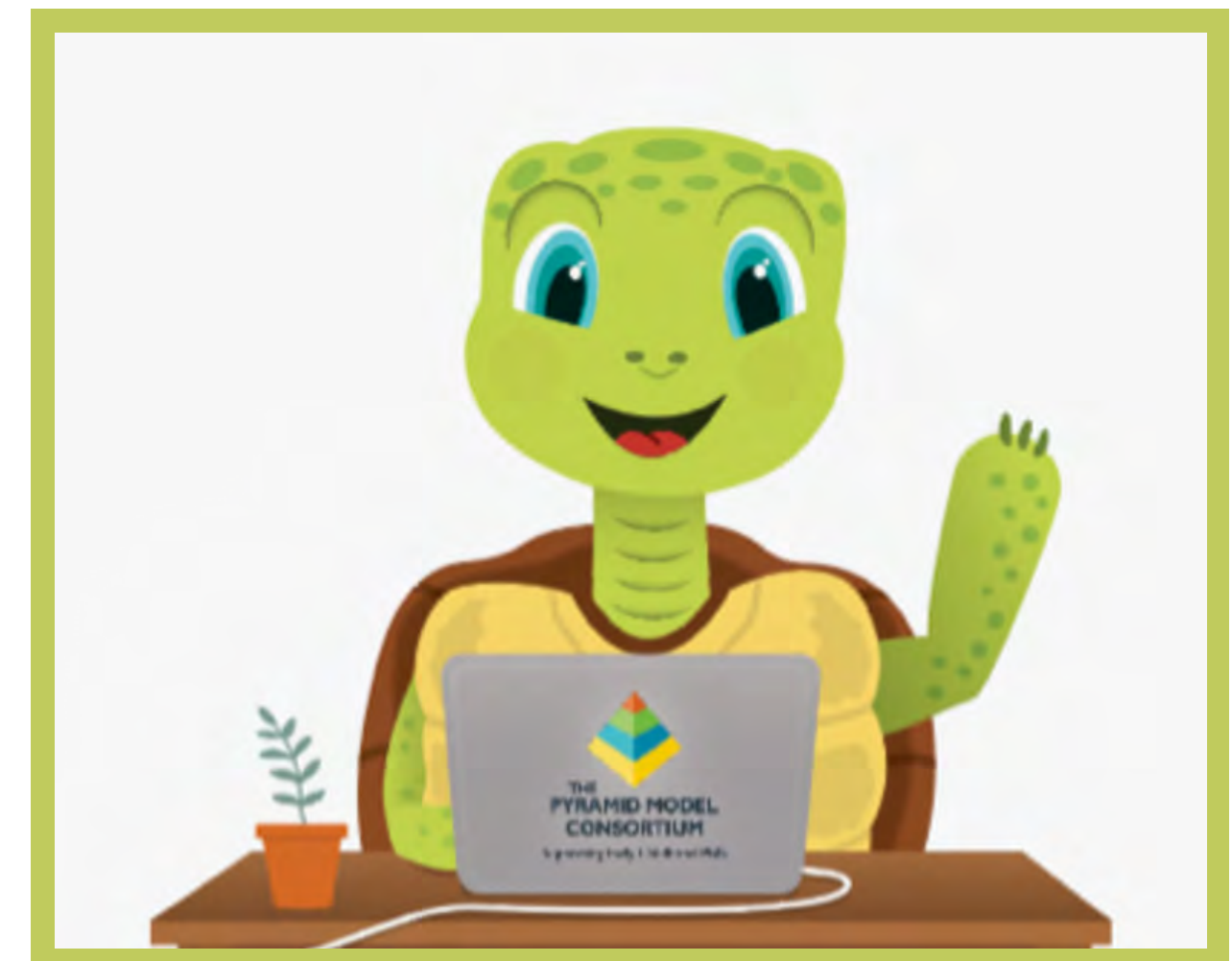
PIDS is the first ever national database specifically designed for early childhood programs implementing the Pyramid Model. The database is a secure, cloud-based application which provides electronic forms used in Pyramid Model. Early childhood programs are able to see and interact with their data in real-time to inform decisions around implementation, professional development, and child/family outcomes.





PIDS ACCESS

PIDS was developed by New York in 2019 and is now operated by Pyramid Model Consortium (PMC). PMC provides State Leadership Teams, coaches, program professionals and others with training and technical assistance in the use of PIDS.



KEY CONSIDERATIONS

As you consider the possibilities of PIDS for your state/province/country there are a number of items to consider as part of the implementation process. The first is to determine the number of programs your portal will be supporting. The following items are steps and roles that support a successful rollout of PIDS.

- All entities gaining access to PIDS must sign the PIDS License Agreement Agreement.
- Designated PIDS State/Province Administrator responsible for the following duties:
 - Assign License Agreements to each program accessing the system, ensure signatures are obtained before access is granted to users.
 - Manage User Accounts - adding and removing users.
 - Designating User Security Roles - managing role-based access control to ensure users are given appropriate access.
 - Adding Protected Training Dates - Entering TPOT, TPITOS, PBC training dates for users Providing ongoing training and technical assistance to users in the state.
- Supporting the State Leadership Team (SLT) by generating data summary reports.
- Facilitating SLT cross-sector data collaboration via Data Sharing Agreements
- Establish Data Governance Policies and Procedures for the collection and use of data.
- Establish Data Collection timelines for data entry, based on SLT mission, vision and goals.

PRICING STRUCTURE

PIDS licenses are purchased at a state/province/country level and are no cost to individual Early Childhood implementation sites.

Initial Contract Onboarding Support Fee: \$1750	TIER 1	Up to 50 Programs	\$7,000 per year
	TIER 2	51-200 Programs	\$10,500 per year
	TIER 3	200+ Programs	\$19,500 per year

Contract dates are July 1 to June 30. Contracts started throughout the year will be prorated.



PYRAMID IMPLEMENTATION DATA SYSTEM (PIDS) TRAINING | \$1750

PIDS is a web-based application accessed through your internet browser that will be used for programs to enter Pyramid Model data and use it to engage in data-informed decision making. This in-person training supports coaches and programs in practical application and use for the PIDS data system.

Up to 50 participants	Material Cost: \$5 per person	In-person events have additional travel costs
-----------------------	-------------------------------	---

Learning Objectives:

- Understanding what Data is and why it is important
- Discuss data governance and security
- Become familiar with data entry in PIDS

Prerequisites:

Pyramid Model Practices
Program Leadership Launch

Targeted Audience:

Data Managers, Administrators, Program Coaches, Internal Coaches, and others who will be entering data into the PIDS system (those entering BIR's, TPOT's, TPITOS, and/or Coaching Logs data)





The Pyramid Model Consortium exists to promote the dissemination, sustainability, scale-up and high-quality use of the ***Pyramid Model for Supporting Social Emotional Competence in Infants and Young Children.***



CONTACT OUR TEAM

Contracts, LT and Coaching:

Rob Corso
Executive Director
rob.corso@pyramidmodel.org

Jay Black
Finance Director
finance@pyramidmodel.org

Professional Development:

Anne Wimmer
Quality Assurance Director
anne.wimmer@pyramidmodel.org

PIDS:

Summer Edwards
Data Systems Director
summer.edwards@pyramidmodel.org

ePyramid:

Erin Kalanick
Operations & Communication Director
erin.kalanick@pyramidmodel.org



ADDITIONAL RESOURCES & PARTNERSHIPS

As you look to implement the Pyramid Model framework in your program and early childhood environments you might need additional tool and resources. This section highlights partnerships that can help you hit the ground running.

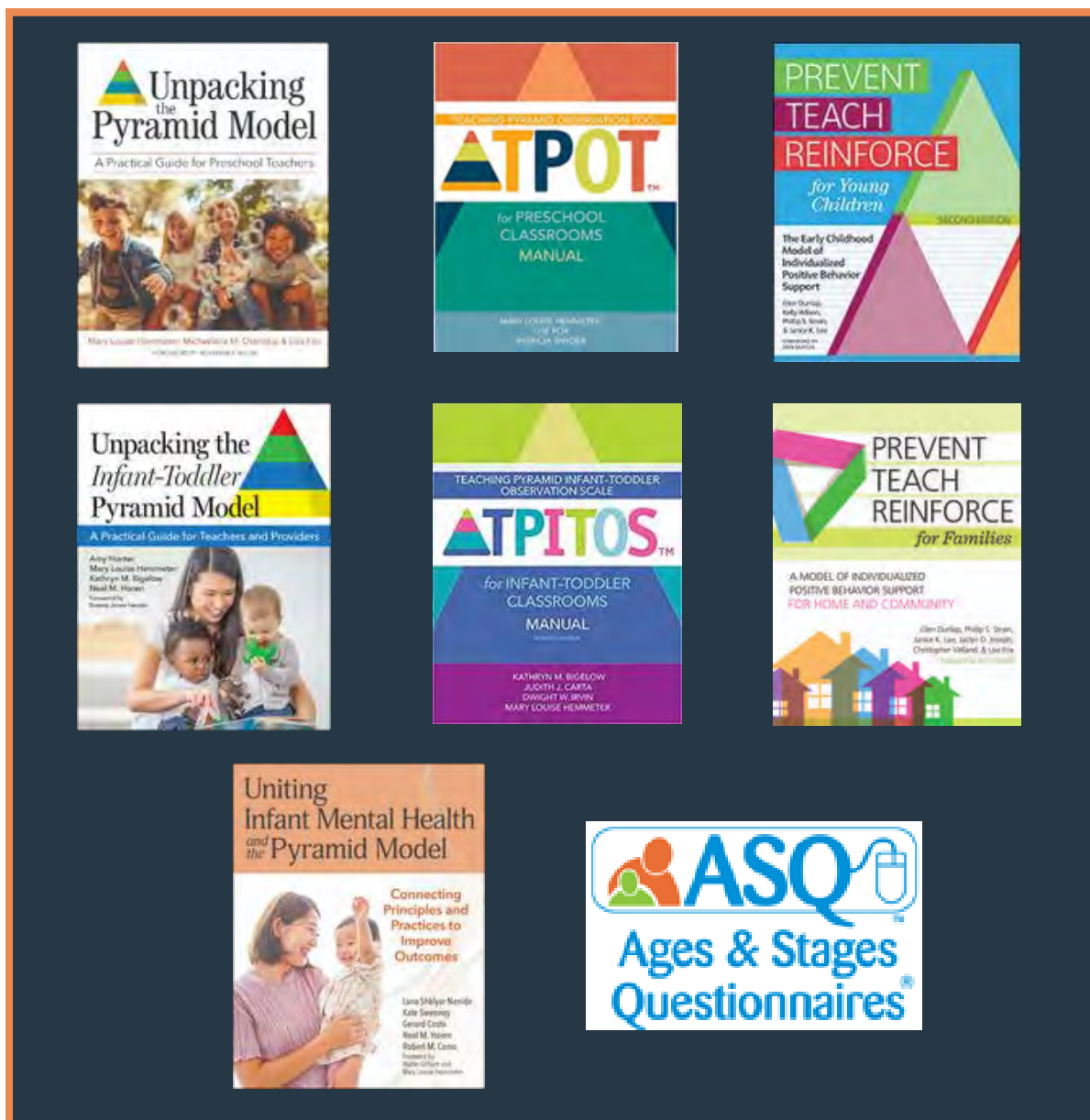




BROOKES

RESOURCES FOR IMPLEMENTING THE PYRAMID MODEL

PMC partners with Brookes Publishing to provide quality resources to implement Pyramid Model. We offer a 20% discount to a variety of Brookes books and manuals.



Visit Brookes Publishing's [Pyramid Model page](#) to learn more about these titles!



RESOURCES FOR IMPLEMENTING THE PYRAMID MODEL

Together with The Pyramid Model Consortium, we've created innovative resources that help teachers immediately and effectively provide social-emotional skill development at school and at home. These partnerships ensure that our tools and resources are classroom tested and designed to support teachers, families and children.

The kits listed below are available for purchase and new kits are being created all the time!

PYRAMID MODEL SOCIAL EMOTIONAL KIT



- Tucker the Turtle Kit
- Problem Solver Solution Kit
- Super Friends Kit
- Classroom Visual Display Kit
- Emotional Literacy Kit

SKU: **PMC** **\$274.99**

VARIATIONS: California Version SKU: **CA-PMC** **\$274.99**

English / French SKU: **PMC-FR** **\$279.00**

PYRAMID MODEL INFANT TODDLER KIT



- Photo Cubes (2), Photo Flip Book, Meddy Teddy Kit
- PMC Infant Toddler, 10 Things to Say, Family Letter
- Self Care IT Caregiver Milestones Flip Book
- Trauma Sensitivity Caring for IT Sheet
- Development of Play Skills for IT, Activity Posters
- IT Daily Reflections Sheets
- Family & Feeling Cards, 1st Then Cards & Board
- IT Teacher Behavior Reflection Tool

SKU: **PMC-IT** **\$288.00**

PYRAMID MODEL FAMILY CHILD CARE TOOL KIT



- 10 Things to Say, Trauma Sensitivity Caregiver
- Family Letter, Positive Feedback, Self Care Poster
- Conversation Starter, Feelings Cards, EL Card Set
- First Then Cards & Board, Spiral Book
- Meddy Teddy Kit, My First Photo Album & Photo Cube
- Pyramid Classroom Poster
- Tucker Turtle Kit
- Super Friend Story Book & Cape

SKU: **PMC-FCC** **\$297.97**

TUCKER AT HOME KIT



- Tucker Turtle Takes Time to Think Scripted Story (home edition)
- Turtle Step Cards
- Tucker Turtle Hand Puppet

SKU: **THK** **\$39.97**

PROBLEM SOLVER SOLUTION AT HOME KIT



- We Can be Problem Solvers scripted story (home edition)
- Perforated Problems Cards w/Ring
- Perforated Problem Story Cards

SKU: **PSHK** **\$31.50**

SURI SPIDER KIT



- Suri Spider Selects a Solution Scripted Story
- Suri Spider Hand Puppet

\$39.99

TINY TEAGAN KIT



- Tiny Teagan's Big Feelings scripted story
- Tiny Teagan Hand Puppet

\$47.97

To take a deeper look at all materials available by Discovery Source check out their catalog!

**Explore
Catalog!**

OUTDOOR PM KIT \$279.97



Cumulus Collections

RESOURCES FOR SUPPORTING THE PYRAMID MODEL

Cumulus Collections has collaborated with PMC to create unique literacy bundles to add to your early childhood space.

Cumulus Collections offers a wide variety of titles with a particular focus on STEAM, bilingual books, and social-emotional learning.

Explore All Literacy Bundles!

Infant / Toddler English Bundle



Small Bundle
\$75.00

all of the above, PLUS:



Medium Bundle
\$150.00

all of the above, PLUS:



Shipping: 10% of total purchase price

Large Bundle
\$200.00

PreK Bilingual Bundle



Full Bundle
\$75.00

Shipping: 10% of total purchase price

PreK English Bundle



Small Bundle
\$75.00

all of the above, PLUS:



Medium Bundle
\$150.00

Shipping: 10% of total purchase price

all of the above, PLUS:



Large Bundle
\$250.00

Social Emotional Learning Bundle



Board Books: 5"x7"

plus 3 additional titles

Big Book Educator Titles: 10"x14"

Superset Bundle
\$663.52
\$530.00

Shipping: 10% of total purchase price

The Caring Crew: ~~\$204.85~~ \$165.00

The Confidence Crew: ~~\$204.85~~ \$165.00

The Resilience Crew: ~~\$204.85~~ \$165.00



THE PYRAMID MODEL CONSORTIUM
Supporting Early Childhood PBIS